



CITY GUIDE

Your Guide to Appleton City Services

MARCH–SEPTEMBER, 2016

VOLUME 13



*Photo taken at the grand opening of the new Appleton Skate Park in Telulah Park
Courtesy of Ron Page/postcrescent.com*

APPLETON PARKS & RECREATION PROGRAMS ARE:

- Affordable
- Convenient
- Educational
- Fun
- Healthy
- Interactive
- Motivational
- Social

Did we say FUN!

>>See details inside!

INSIDE THIS ISSUE:

APPLESource

- Community Events
- Immunization Clinics
- Library Programs
- Pet Licensing
- Recycling & Disposal
- Yard Waste Information

APPLETON PARKS & RECREATION ACTIVITIES

- Parks, Trails & Reid Golf Course
- Sports Leagues & Camps
- Pool Info & Swim Lessons
- Special Events & Trips
- Fitness/Wellness Programs
- Youth/Adult Programs & Activities



**Like us on Facebook
Follow us on Twitter!**

NEW LOOK. SAME COMMITMENT.



**THE COMMUNITY
BLOOD CENTER**
connecting lives | sharing life

MIRA,
Life saved by blood donations



Visit any of our 4 donor centers:

APPLETON
4406 W Spencer St
Appleton, WI

OSHKOSH
2100 Omro Rd
Oshkosh, WI

LITTLE CHUTE
1915 E Main St
Little Chute, WI

WOODRUFF
1575 Hwy 51 North
Woodruff, WI

800-280-4102 | www.communityblood.org

Welcome to the City of Appleton Magazine



...meeting community needs...enhancing quality of life.

City Hall

100 North Appleton Street, Appleton, WI 54911
(corner of College Avenue and Appleton Street)
Cashiers & Information on 1st Floor
City offices located on the 5th and 6th Floors
Office Hours: 8:00 A.M. – 4:30 P.M., Monday – Friday
General Information: 920-832-6173



Visit us at: www.appleton.org

Appleton Parks and Recreation

Located in City Hall, 100 North Appleton Street, Appleton
1st Floor Customer Service Center
Office Hours: 8:00 A.M. – 4:30 P.M., Monday – Friday
Main Line: 920-832-5905
Info/Cancellation Line: 920-832-3900
Website: www.appletonparkandrec.org

Common Council Meetings: at City Hall on the 1st and 3rd Wednesday of every month at 7:00 P.M.

Interested in Employment with the City of Appleton? Go to www.appleton.org and check out our current vacancies. Questions? Call 920-832-6458.

The Americans with Disabilities Act: The City of Appleton will adhere to all applicable Federal and State laws, regulations and guidelines with respect to providing reasonable accommodations to people with disabilities as required (where accommodations do not cause an undue burden on the City) to afford equal opportunity for all. Reasonable accommodation for persons with disabilities will be made upon request and if feasible by contacting the City of Appleton Human Resources Department at 920-832-6458.

NOTICE: Although the information in this magazine is accurate at the time of printing, some information may be subject to change. Please check the City's website at www.appleton.org for any changes or updates and for Public Service Announcements.

PLEASE NOTE: City Hall and all non-critical emergency facilities will be closed on these dates:

Memorial Day	May 30
Independence Day	July 4
Labor Day	September 5

COMMUNITY EVENTS

Whether you like to browse the farmers market, show your patriotism at the Memorial or Flag Day parades, enjoy live music at the concert series or appreciate the creativity of the spectacular group of artists at the annual Art at the Park event, you're sure to find something for everyone in the family!

EVENT

Appleton Farm Market
Appleton Old Car Show
Art at the Park
Art on the Town
Children's Parade
City Band Concerts
Fireworks/Civic Celebration
Flag Day Parade
Juneteenth Celebration
License to Cruise
Lunchtime Live Concerts
Memorial Day Parade
Octoberfest
Playground Fair
Summer Concert Series

LOCATION

College Avenue
Pierce Park
City Park
Downtown
College Avenue
Pierce Park
Memorial Park
College Avenue
City Park
College Avenue
Houdini Plaza
College Avenue
Pierce Park
Houdini Plaza/Jones Park

DATE/TIME

Sat.'s June 18-Oct. 29, 8 a.m.-12:30 p.m.
Sun., July 17
Sun., July 31
3rd Fri., May-Sept., 6-9 p.m.
Wed., July 27, 6 p.m.
Tues.'s, June 14-Aug. 16, 7 p.m.
Sun., July 3
Sat., June 11, 2 p.m.
Sun. June 19, noon-6 p.m.
Fri., Sept. 23, 6 p.m.
Thur.'s June 2-Sept. 1, 11:30 a.m.-1 p.m.
Mon., May 30, 9 a.m.
Sat., Sept. 24, 9 a.m.
Thur. & Fri., July 28 & 29, 2-8 p.m.
Thur.'s June 2-Sept. 1, 5:30-8:30 p.m.

CONTACT

www.appletondowntown.org
www.appletonoldcarshow.com
www.troutmuseum.org
www.appletondowntown.org
www.buildingforkids.com
www.appletonparkandrec.org
www.appletonjaycees.org
www.appleton.org
www.appleton.org
www.octoberfestonline.org
www.appletondowntown.org
www.appleton.org
www.octoberfestonline.org
www.appletonparkandrec.org
www.appletondowntown.org

TABLE OF CONTENTS

CITY SERVICES

Free Overflow Collection	6
Holiday Refuse/Recycling Schedule	9
Immunization Clinics	13
Library Activities/Programs	13
Outdoor Fireplace Permits	14
Pet License	13-14
Police Department Happenings	14
Property Tax Payments	5
Recycling	8-9
Solid Waste Disposal	6-7
Tire Collection	7
Yard Waste Pickup & Waste Drop-off	10

PAGES

PARKS & RECREATION

Community Partners	44, 49
Fitness Classes & Active Adults	30-33
Parks, Pavilions & Trails	44, 46-47
Pool Programs & Information	34-43
Preschool & Early Childhood Programs	18-21
Reid Golf Course	45, 51
Special Events & Trips	15-17
Summer & Fall Dance	21-23, 30
Summer Camps & Workshops	20, 22, 24-27
Swim Pass Form, Registration Info & Form	52-54
Youth & Adult Sports	24-29
Youth Activities	17-20

PAGES



Visit www.appleton.org for "My Neighborhood" Information about:

- Garbage & Recycle Pick-up
- Property Tax
- Government Information
- School Information
- Voting District & More

**Look for the
September-March
Edition coming out
in September 2016**

1,055,544 rides last year. Why not be one of them?



Let Valley Transit get you
where you need to go.

For more information,
www.myvalleytransit.com
920-832-5800

Photo by Michael Lechisen, Image Studios



SPRING ELECTION

The Spring Election will be held on Tuesday, April 5, 2016. The ballot will include the following offices: Presidential Preference vote for President of the United States, Supreme Court Justice, Court of Appeals Judge, Circuit Court Judge, County Nonpartisan Offices, and Municipal Offices for Mayor, Attorney, and Alderpersons of even-numbered districts. Please remember these important deadlines as the Spring Election approaches:

- Wednesday, March 16 – last day to register to vote by mail;
- Monday, March 21 – first day to early vote an absentee ballot in the Clerk's Office;
- Thursday, March 31 – last day to request an absentee ballot by mail;
- Friday, April 1 – last day to register to vote prior to the Spring Election in the Clerk's Office AND last day of early voting in the Clerk's Office.

Voter Photo ID Reminder

Photo ID is required for all voters wishing to vote in-person or by absentee ballot. Voters appearing in-person to vote will be required to present a valid photo ID before receiving a ballot. Those wishing to vote absentee by mail will be required to furnish a copy of their photo ID to the Clerk's Office before their ballot will be mailed to them. For a list of acceptable photo IDs and other information related to Wisconsin's Voter ID law, please visit www.bringit.wi.gov or contact the Clerk's Office at 920-832-6443.



2016 ASSESSED VALUES

This year's assessed values will be completed in April. If your value is changed, you will receive a notice on or around May 1. The Board of Review will be held in late May after which the 2016 values become final. This summer, we will be requesting interior inspections in certain neighborhoods to update our property records for a future citywide revaluation. The Wisconsin Assessor's Manual requires that assessors periodically complete interior inspections of all property. We encourage you to call 920-832-5850 if you have questions.

NEIGHBORHOOD PROGRAM

The Neighborhood Program was developed to build bonds and foster communication between City Hall and Appleton neighborhoods. Fifteen neighborhoods have registered thus far. Register today and begin making a positive change in your neighborhood. Benefits of registering include:

- Map and demographic information of your neighborhood;
- Connect with neighbors and local businesses in your neighborhood;
- Receive information on city events, workshops and other valuable educational opportunities;
- Notification from developers interested in obtaining neighborhood input on projects;
- Eligibility for neighborhood grants.*

**Now accepting applications for the Neighborhood Grant Program. Availability is contingent upon funding and location within the City.*

For more information, please visit the Community and Economic Development Department's web page at www.appleton.org/residents/neighborhood-program or call 920-832-6468.



2017 BUDGET

Planning is underway for the City's 2017 Budget and actual development of it will begin in early summer. The proposed budget will be distributed to Council on October 5, at which time copies will be available in the Finance Department and at the Public Library for review by the public. It will also be available electronically on the Finance page of the City of Appleton website. There will be a public hearing in early November (date TBD), prior to budget adoption on November 9, at which time the public is invited to offer comments.

Please take the opportunity to review the proposed budget when it becomes available and to contact your alderperson, City staff, or the Mayor with any questions or comments.



PROPERTY TAX PAYMENTS

Installment due dates for 2nd, 3rd and 4th payments are March 31, May 31 and August 1. For ways to make your payments, please visit the City's website at www.appleton.org/government/real-estate-taxes. Tax payment questions? Please call 920-832-6442.

TOGETHER LET'S PROTECT LOCAL WATERS!

Always pick up pet waste!

Spring is a rainy time of year! Prevent bacteria from entering our lakes and streams by carrying small plastic bags when walking your dog, collect droppings, tie a knot in the bag, and dispose of it properly. Do not throw pet waste down the storm drains. At home, pick up pet waste often. Even waste in your backyard can pollute local waterways.

Prevent pollution and save money!

A rain barrel system collects rainwater from your roof that would otherwise be lost to runoff. They can be purchased at local hardware stores or built at a rain barrel workshop. Instead of paying for water from the tap, you can use the water you collect to keep your landscape healthy—saving you money! For more information, visit www.RenewOurWaters.org.



GARBAGE

• **GARBAGE PICK UP** is done weekly from City-supplied garbage carts.

- ▶ Place your City garbage cart out for pick up the night before your scheduled day (between 5 P.M. and 3 A.M.).
- ▶ The handle of the garbage cart should face your house.
- ▶ Place your cart at least 5 feet from other objects on the terrace such as other garbage or recycling carts, mailboxes, trees, etc. Garbage trucks need this space for the truck arms to grab the cart.
- ▶ Do not park vehicles in front of or near carts.
- ▶ Never place a cart in the road. This is always a safety concern and in winter does not allow plows to clear snow close to the curb. When there are snow banks, place the cart in your driveway apron opening or clear an area on your terrace to allow crews access to your cart. Do not place carts on snow banks.
- ▶ Any bags that cause the lid not to close on City garbage carts are considered to be extra garbage. (See the next section for details.)
- ▶ Return your cart to its storage area by midnight the day of pick up.
- ▶ Please use plastic bags for items inside City garbage carts.
- ▶ Check www.appleton.org "My Property Info" for garbage and recycling pickup days specific to your address.



If your garbage cart is too small, too large or needs repair, the property owner should call 920-832-5580.

• **EXTRA GARBAGE BAGS** – Because garbage cart charges are based on volume, bagged garbage or trash that doesn't fit in your cart must be marked with a disposal sticker. Bags should weigh less than 45 pounds.

- ▶ Unlimited bags of extra household garbage are picked up each week with a \$4 per bag disposal sticker.
- ▶ Put extra bags approximately 5 feet from garbage carts.
- ▶ The disposal sticker should be attached to bags and be visible to drivers.

• **APPLIANCE TAGS, GRASS PUNCH TICKETS and DISPOSAL STICKERS** are available at the following locations:

All Appleton Fire Stations

- #1-700 N. Drew St.
- #2-1801 S. Matthias St.
- #3-801 W. Grove St.
- City Hall Cashier
- Public Works (OPS Div)
- Valley Transit
- Ace Hardware
- Kitz & Pfeil Hardware
- Van's Northside Hardware

- #4-724 E. Greenfield St.
- #5-1701 W. Brewster St.
- #6-4930 N. Lightning Dr.
- 100 N. Appleton St.
- 2625 E. Glendale Ave.
- 801 S. Whitman Ave.
- 500 E. Northland Ave.
- 1919 E. Calumet St.
- 1415 N. Richmond St.

• **SPECIAL GARBAGE PICK UP**

If you are moving or just cleaning out, you may request a special pickup for \$75. Call 920-832-5580 for details.



FREE LARGE ITEM PICKUP IS BI-WEEKLY

Large item pickup is every other week on your regular garbage day opposite your recycling week at no charge. (This does not include extra bags of garbage.)

• **FREE LARGE ITEMS** that are too large to fit into City-supplied garbage carts include such things as:

- ▶ Chairs, couches, mattresses, carpet (tie and bundle, no longer than 4 feet, not to exceed 45 lbs.), lumber (pound nails in or remove, tie and bundle, no longer than 4 feet, not to exceed 45 lbs.), furniture, bikes, lawnmowers (gas/oil removed), grills (propane tanks removed), toilets, etc.
- ▶ Appliances, garbage bags and tires require a prepaid disposal sticker.
- ▶ When placing these items out for pick up, the items should be placed approximately 5 feet away from the automated cart and not lean against it.
- ▶ **Items NOT picked up:** boxes (recyclables), garbage bags (without stickers), hazardous waste, yard waste, concrete, shingles and electronics (see Electronics section below).

Recycling is picked up according to the usual schedule and is not part of this collection. One truck will come for the City-supplied garbage carts and another truck for the large items. Visit www.appleton.org "My Property Info" for garbage and recycling pick up days specific to your address.

• **MAJOR APPLIANCES** require a disposal tag. **Pick up is on or after your garbage day.**

- ▶ **Tags for Freon appliances are \$25 and are needed for:** refrigerators and freezers (remove doors), air conditioners and dehumidifiers.
- ▶ **Tags for non-Freon appliances are \$20 and are needed for:** stoves, ovens, dishwashers, washing machines, clothes dryers, furnaces, water heaters, microwave ovens and other major appliances.

The disposal charge is reduced when appliances are brought to the Public Works Customer Service Center located at the Yard Waste Site. See Yard Waste Site information on page 10 for drop-off fee information.

• **ELECTRONICS** – The following **electronics must be recycled and will not be picked up with regular garbage per Wisconsin state law:** computers, monitors, TVs and other video display devices, fax machines, DVD and VCR players, printers, keyboards and mice, hard drives, speakers, cell phones, cameras, portable music players, gaming devices and small laptops.

Many electronic items contain harmful materials including lead, mercury, cadmium, chromium, other heavy metals, and chemical flame retardants that can leak into the environment where they can affect human and environmental health. Many of these electronic items also contain valuable reusable materials. For a list of E-Waste collectors and recyclers, visit the DNR website at www.dnr.wi.gov/topic/Recycle/.



• FLUORESCENT BULBS

All fluorescent bulbs, including compact fluorescent bulbs (CFLs), contain small amounts of mercury. Tube type fluorescent bulbs and CFLs may be brought to Outagamie County Recycling & Solid Waste for a fee or visit their web site at www.RecycleMoreOutagamie.org.

• TIRES are picked up curbside on your regular garbage day.

A prepaid disposal tag is required.

- ▶ Tire tags cost \$5 each.
- ▶ There is a limit of 4 tires per household.
- ▶ Tires can also be brought to the Glendale Avenue Yard Waste Site. Fees and limits apply.

2016 YARD SITE FREE TIRE WEEKENDS

Free!

Fri., April 15	Fri., September 16
Sat., April 16	Sat., September 17
Sun., April 17	Sun., September 18
Mon., April 18	Mon., September 19

Tires can be brought to the Glendale or Whitman yard sites at no charge on the dates listed above. Tire size of 18" or less and 4 tires per household will be accepted (rims included).

• CARPET is picked up curbside on your regular garbage day during free large item weeks.

- ▶ Cut carpet into 4-foot strips and roll up.
- ▶ Rolls should weigh less than 45 pounds.
- ▶ Tie or tape rolls.

Carpeting removed by a contractor should be disposed of by the contractor. If you are unable to meet the restrictions for placing items curbside, they can be taken to Outagamie County Recycling & Solid Waste or the Glendale Yard Waste Site (see page 10 for fee information).

• LUMBER is picked up curbside on your regular garbage day during free large item weeks.

- ▶ Cut lumber into 4-foot lengths.
- ▶ Bundle items to weigh less than 45 pounds.
- ▶ Pound in or remove any nails or large staples.

If you are unable to meet the restrictions for placing items curbside, they can be taken to Outagamie County Recycling & Solid Waste, the Glendale Yard Waste Site (see page 10 for fee information) or Landfill Reduction and Recycling, Inc. at 3001 E. Glendale Avenue (visit www.landfillreduction.com for more information).

• CONSTRUCTION MATERIALS generated by a contractor should be disposed of by the contractor. Work done by the homeowner may be set out curbside in compliance with specifications for large item materials (see page 6). If you are unable to meet the restrictions for placing items curbside, they can be taken to Outagamie County Recycling & Solid Waste, the Glendale Yard Waste Site (see page 10 for fee information) or Landfill Reduction and Recycling, Inc., 3001 E. Glendale Avenue (visit www.landfillreduction.com for more information).

• GRASS CLIPPINGS are **not** picked up curbside. They may be taken to the Glendale Avenue or the Whitman Avenue drop-off site. Drop-off fees are \$4 per bag or \$40 per punch card.

• HOUSEHOLD HAZARDOUS WASTE – Some wastes are just too hazardous for landfills and require special disposal through the Outagamie County "Hazardous Waste Collection". Hazardous wastes include: pesticides, herbicides, poisons, acid,

lead- and oil-based paints, automotive and rechargeable batteries, mercury, and some cleaning materials. This program is limited to households only and is held on select dates May through October. For dates, times or to schedule an appointment, visit their website

www.RecycleMoreOutagamie.org or call 920-832-5277. If you are unable to attend, you may take your hazardous waste directly to the Brown County Hazardous Waste Facility free of charge. Visit www.BrownCountyRecycling.org or call 920-492-4950.

• PAINT – To dispose of latex paint, please consider giving usable paint to friends, neighbors, theater groups or housing assistance organizations. If you must dispose of **latex** paint, please follow these directions:

• **For small amounts:** Remove the lid and let dry in the can. Occasionally stir the paint.

• **For larger amounts:** Line a cardboard box with a plastic trash bag. Layer an absorbent material (kitty litter, sawdust, shredded newspaper) on bottom; pour a layer of paint and repeat as necessary. Once the paint is dry, dispose of the entire trash bag and dry empty paint cans in your regular trash. Any **oil- or lead-based paints** should be taken to a hazardous waste collection.

• WASTE OIL, FILTERS AND ABSORBENTS – These items must be recycled by homeowners, farmers and businesses. Visit www.RecycleMoreOutagamie.org or call Outagamie County Recycling & Solid Waste at 920-832-5277.

• MEDICAL SHARPS DISPOSAL – To reduce public health risks such as accidental needle sticks, Wisconsin law requires all citizens to safely manage needles, lancets and syringes. It is illegal to put sharps in the trash or with recyclables. Used and unused sharps must be placed in an acceptable sharps container and taken to a registered collection facility such as ThedaCare Regional Medical Center – Appleton (formerly Appleton Medical Center) or St. Elizabeth Hospital emergency rooms, Consumer Prescription Center, Copps #8118 or #8123, Shopko Express Pharmacy or Mosaic Family Health (formerly Fox Valley Family Medicine). **NEVER put sharps in the trash or with recyclables!** Visit Outagamie County Public Health at www.outagamie.org. See DNR list for more locations in the Appleton and surrounding areas.

• PRESCRIPTION DRUGS & OTHER MEDICINES may be disposed of at the Appleton Police Department lobby at 222 S. Walnut Street. Please empty all pills into a sandwich sized, sealable bag. Keep all liquids, creams, and powders in original containers. Visit www.RecycleMoreOutagamie.org for more information.

Follow Public Works:



Appleton DPW



City of Appleton Public Works

AMERICAN FLAG DISPOSAL

As American flags become worn or damaged, it is important for their disposal to be proper and dignified. The City of Appleton has placed a container at the Glendale Yard Site and all six fire station locations for residents to drop off unserviceable American flags free of charge. The City will then deliver the unserviceable flags to the American Legion for proper disposal.

RECYCLING

Recycling is picked up every other week on the day of your regular garbage collection. The map shows regular pickup days and designates recycling Areas #1 and #2. If your recycling day falls on a holiday, the pickup schedule will slide one day, so please check the Holiday Garbage & Recycling Pick Up Schedule on page 9 for specific dates.

Recycling pick up will occur on the weeks shown below:



AREA #1

Mar	21-25	June	27-July 1
Apr	4-8	July	11-15
Apr	18-22	July	25-29
May	2-6	Aug	8-12
May	16-20	Aug	22-26
May	30-June 3	Sept	5-9
June	13-17	Sept	19-23

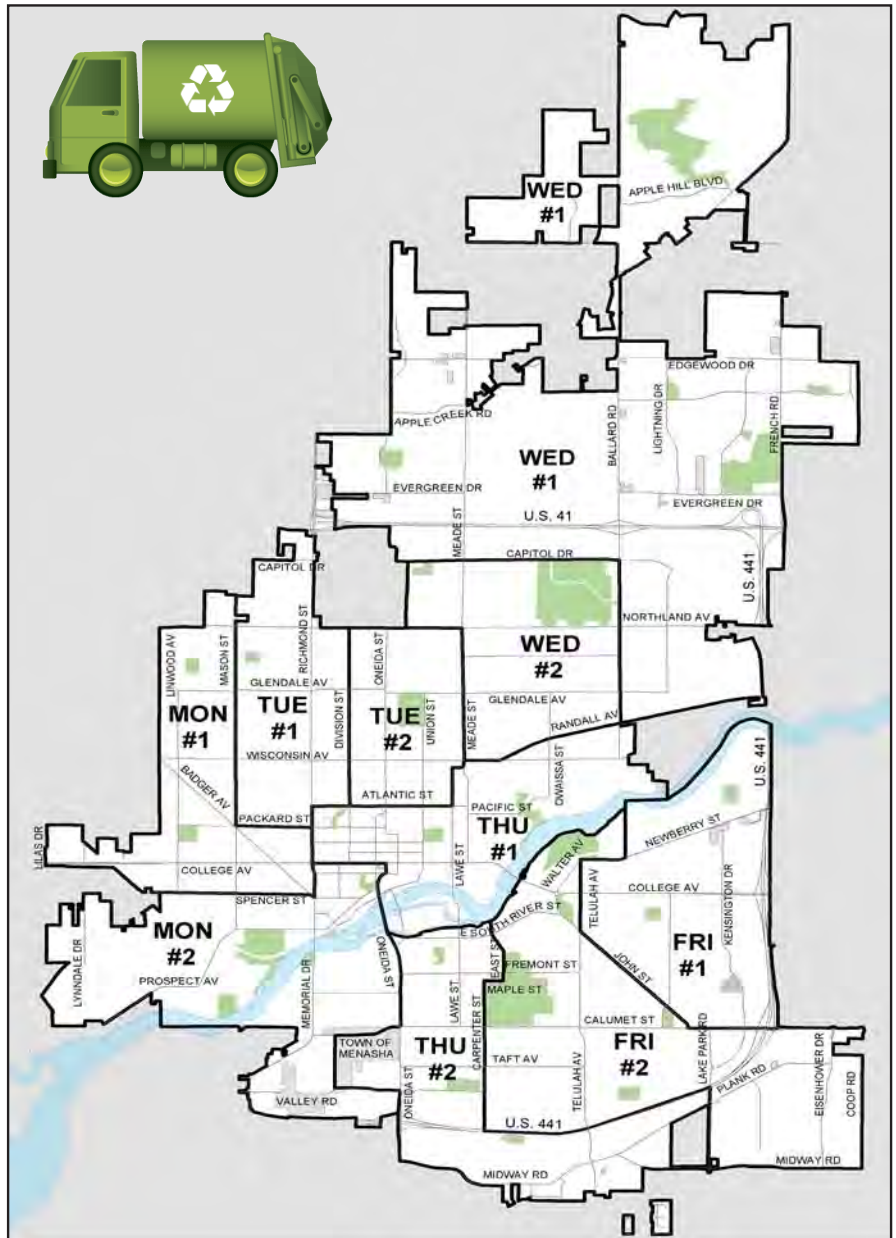
AREA #2

Mar	14-18	June	20-24
Mar	28-Apr 1	July	4-8
Apr	11-15	July	18-22
Apr	25-29	Aug	1-5
May	9-13	Aug	15-19
May	23-27	Aug	29-Sept 2
June	6-10	Sept	12-16

Visit www.appleton.org "My Property Info" for garbage or recycling pickup days specific to your address.

For recycling pick up concerns, please contact Inland Service Corporation at 920-759-0501.

For recycling questions and information, please contact Outagamie County Recycling & Solid Waste at 920-832-5277, visit www.RecycleMoreOutagamie.org or email recycle@outagamie.org.



RECYCLE BUILDING MATERIALS

There is now an option for discarding excess or used building materials that are in good condition. The Fox Cities Area Habitat for Humanity ReStore, a thrift type shop at 3000 E. College Avenue, accepts donated items such as cabinets, lighting and plumbing fixtures, doors, lumber, flooring and much more. Call 920-967-8907 for your free pick up. Your contribution will help others as well as conserve landfill space and lower disposal fees.

New and/or used asphalt shingles can be recycled at the following area business: Murphy Concrete and Construction (W5070 Quarry Road, Appleton, 920-749-3395).

Remember, for any type of construction or remodeling projects; please check to see if a permit is required by contacting the City's Inspections Division at 920-832-6411.



DISPOSING OF MERCURY

Exposure to releases of mercury into the environment has been negatively linked to human and wildlife health impacts. Mercury should **never** be poured down a drain or sewer, flushed down a toilet or thrown in the trash. Items containing mercury (e.g., thermometers and thermostats) should be taken to a Hazardous Waste Collection for proper disposal.

For disposal of household mercury containing devices, such as old thermostats or thermometers, contact Outagamie County Recycling & Solid Waste at 920-832-5277. For more information on mercury and ways the City of Appleton is working to reduce mercury in the Fox River, please visit the Department of Utilities at www.appleton.org.



CITY ITEMS AUCTIONED ON INTERNET

The City of Appleton offers used and surplus equipment on eBay. To bid or watch items the City has for sale, visit www.appleton.org, under "Online Services", click on the "Surplus City Items" link.



RECYCLE! IN WISCONSIN IT'S THE LAW

Outagamie County Recycling & Solid Waste contracts with one private hauler to provide curbside collection for households within the county, including all of Appleton.

Recycling is picked up every other week on your regular garbage day. All items should be placed inside the City-supplied recycling cart for automated curbside pick-up according to the schedule on page 8.

Acceptable items include: soda, water and other drink bottles; food and household bottles, jars and jugs; dairy containers and lids; produce, bakery and deli containers; newspaper and inserts; cardboard, cereal and cracker boxes; junk mail, office paper, phonebooks, books, magazines and catalogs; milk, juice and soup cartons; aluminum bottles and cans; steel, tin and bi-metal cans; empty aerosol cans; food and beverage glass bottles and jars.

DO NOT ACCEPT: plastic bags, wrap or film; motor oil bottles; Styrofoam™; paper contaminated by food or grease; tissue; gift wrap; aluminum pans/foil; empty paint cans.

How to place recycling at the curb:

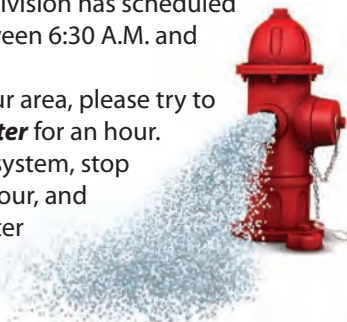
- Empty and rinse all bottles and containers. Remove and discard all screw caps.
- Place all recyclable materials in the provided cart. There is no need to separate paper from glass, aluminum, plastic and tin.
- Please **do not** place recyclables in plastic bags and **do not** place trash in your recycling bin.
- Flatten and cut cardboard boxes to no larger than 2'x2'.
- Because garbage and recycling are picked up by separate trucks, please keep your recycling cart 5 feet away from obstructions such as your garbage container, mailbox, utility poles, trees and parked cars. If possible, put garbage and recycling on opposite sides of the driveway.
- Be sure to have recyclables curbside the night BEFORE your pick-up day (pick-up begins at 4:30 A.M.).
- All recyclables must fit into your cart with the lid closed. For extra recyclables, you may:
 - Save for a future pick up day;
 - Ask a neighbor if they have extra room in their cart;
 - Bring to the County drop off site located at 1919 Holland Road (920-832-5277), Monday through Friday, 7:00 A.M. to 3:30 P.M. and Saturdays, 7:00 A.M. to 11:00 A.M.



WATER HYDRANT FLUSHING

The Public Works Operations Division has scheduled hydrant flushing weekdays between 6:30 A.M. and 4:30 P.M.

If you see crews working in your area, please try to use as little, or if possible, **no water** for an hour. If you find discoloration in your system, stop using the water, wait about an hour, and then draw off the discolored water **through a cold-water tap only.**



HOLIDAY PICK UP SCHEDULE RESIDENTIAL GARBAGE & RECYCLING

Your **Holiday Recycling** pick up may not be on the same day as **Holiday Garbage** pick up. For dates not listed below, please follow the regular (non-holiday) schedule on page 8. NOTE: Holiday pick up times may be earlier or later than your normal time.

EASTER

No changes to regular pick up schedule.

MEMORIAL DAY

IF YOUR REGULAR PICK UP DATE IS...	THEN YOUR GARBAGE DATE IS...	THEN YOUR RECYCLING DATE IS...FOR AREA #1
Mon., May 30	Tue., May 31	Tue., May 31
Tue., May 31	Tue., May 31	Wed., June 1
Wed., June 1	Wed., June 1	Thur., June 2
Thur., June 2	Thur., June 2	Fri., June 3
Fri., June 3	Fri., June 3	Sat., June 4

INDEPENDENCE DAY

IF YOUR REGULAR PICK UP DATE IS...	THEN YOUR GARBAGE DATE IS...	THEN YOUR RECYCLING DATE IS...FOR AREA #2
Mon., July 4	Tue., July 5	Tue., July 5
Tue., July 5	Tue., July 5	Wed., July 6
Wed., July 6	Wed., July 6	Thur., July 7
Thur., July 7	Thur., July 7	Fri., July 8
Fri., July 8	Fri., July 8	Sat., July 9

LABOR DAY

IF YOUR REGULAR PICK UP DATE IS...	THEN YOUR GARBAGE DATE IS...	THEN YOUR RECYCLING DATE IS...FOR AREA #1
Mon., Sept. 5	Tue., Sept. 6	Tue., Sept. 6
Tue., Sept. 6	Tue., Sept. 6	Wed., Sept. 7
Wed., Sept. 7	Wed., Sept. 7	Thur., Sept. 8
Thur., Sept. 8	Thur., Sept. 8	Fri., Sept. 9
Fri., Sept. 9	Fri., Sept. 9	Sat., Sept. 10

NEW WATER METER INSTALLATION

The Department of Public Works will be installing new water meters throughout the city over the next few years. More information can be found at www.appleton.org/watermeterinfo.

CURBSIDE PICKUP OF YARD WASTE BRANCHES AND BRUSH

The Public Works Department Spring curbside yard waste, branches and brush collection is weather dependent. When the collection begins it will run for four consecutive weeks. A Public Service Announcement will be released through TV, radio, *The Post Crescent*, Facebook, and Twitter before the start of the spring collection.

Yard waste will be collected from the terrace on the day following your regular garbage day.

Yard waste must be in containers, lawn and leaf paper bags or tied in bundles.

- ▶ Containers should have handles, be 33 gallons or less, and weigh less than 45 pounds when full.
- ▶ Paper lawn and leaf bags can be purchased at most hardware stores and home improvement centers.
- ▶ Branches and brush must be cut to 4-foot lengths and bundled with twine. Bundles must be less than 2 feet around and weigh less than 45 pounds.
- ▶ In spring, branches, brush and lawn bags must be placed on your terrace, between the sidewalk and the curb, the night before collection.

Please do not use plastic bags, boxes, tarps or 55-gallon fiber barrels or their liners.

Branches and brush can be taken to one of the two yard waste sites free of charge.

In the event of a major storm, storm pickup information will be distributed through Public Service Announcements on the TV, radio, *The Post Crescent*, Facebook, and Twitter. The decision for storm pickup is determined on a storm-by-storm basis and is determined by evaluating the severity and widespread extent of the damage.

Follow Public Works:



Appleton DPW



City of Appleton Public Works

WHY NO OVERNIGHT PARKING?

The reasons range from operational benefits for the Department of Public Works and Police operations to aesthetic reasons. If an emergency arises (i.e., mechanical breakdown, home or street construction or extra guest vehicles), the police can give short-term permission to park overnight on a street. To avoid a citation for overnight parking the Police Department must be notified the day or evening needed.

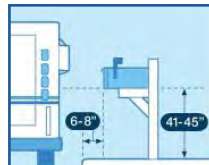
Even with permission from the Police Department there are some restrictions and guidelines:

- The vehicle must be parked in a legal parking spot.
- Provide adequate room for garbage and recycling trucks to reach the carts on pickup days.

We are very proud of the clean and safe city of Appleton. Please help us to maintain these standards.

MAILBOX PLACEMENT

Proper mailbox placement is important for City crews as well as Post Office mail carriers. Snowplows, street sweepers, and garbage trucks can damage mailboxes that extend over



the road. The City of Appleton will not be responsible for any mailbox damaged in the course of City operations that does not meet Post Office requirements.

Please ensure your mailbox is in compliance with Post Office guidelines. For guidelines and additional information, please visit www.usps.com or call 1-800-275-8777.

YARD WASTE DROP-OFF SITES

WHITMAN YARD SITE – 701 S. Whitman Avenue

(located next to the Valley Transit repair facility)

April 1 – November 21

Friday, Saturday, Sunday & Monday 9 A.M.-6:45 P.M.

**CLOSED Tuesday, Wednesday, Thursday and on City-observed holidays (Including Easter Sunday).*

**Accepts grass clippings, brush, and motor oil. No anti-freeze accepted. Attendants are available for questions.*

GLENDALE YARD SITE – 2625 E. Glendale Avenue

(located East of the Department of Public Works)

April 1 – November 21

Friday, Saturday, Sunday & Monday 9 A.M.-6:45 P.M.

**CLOSED Tuesday, Wednesday, Thursday and on City-observed holidays (including Easter Sunday).*

The Glendale Yard Site is a full customer service center and is available to all residents of the City of Appleton (non-commercial use only). This site accepts grass clippings, brush, yard waste, motor oil, antifreeze, metal, appliances, tires, car batteries, garbage, and unserviceable American flags. See the site attendant before dropping off any of the above-mentioned items. Please tarp or secure loads taken to the yard waste sites. Branches and debris that fall onto the road are a safety hazard.

Please be prepared to show proof of residency to the attendant. Residential waste only - no refuse or yard waste accepted from contractors.

CITY OF APPLETON DROP-OFF FEES (Cash and Checks Accepted)	
ITEM	2016 FEE
Grass Clippings (30 gal. bag)	\$4 per bag
Grass Clipping Card	\$40
Branches & Brush	Free
Oil (10 gallon limit)	Free
Antifreeze	Free
Car Batteries	Free
Unserviceable American Flags	Free
Freon Appliances	\$20
Non-Freon Appliances	\$15
Tire	\$5
Garbage-1 vehicle	\$15 (minimum fee)
Garbage-1 vehicle & trailer	\$35 (minimum fee)

The yard waste sites DO NOT accept DIRT, SOD, PROPANE TANKS, CONCRETE, SHINGLES, OIL FILTERS, ELECTRONICS or HAZARDOUS WASTE. Animal waste is considered to be garbage. It must be bagged and garbage fees apply.

You can find seasonal information, yard waste site information, general overflow and other collections information by calling the Public Works information line at 920-832-5998.

CITY COMPOST PROJECT

The City of Appleton is producing compost from what were previously considered to be city waste products. These ingredients include: leaves, brush and biosolids from the Appleton Wastewater Treatment Plant (AWWTP). Over time the composting process converts these ingredients into a stabilized, nutrient rich material. The compost has been certified by the United States Composting Council's Seal of Testing Assurance program.

For more information on residential giveaways and program promotions, please call 920-832-5945 or visit the compost webpage on the AWWTP departmental link at www.appleton.org.

TREE FOR A TREE SEEDLING PICK UP

Thanks to all who participated in this year's "Tree for a Tree Program". This program helps to keep garbage collection costs down. To pick up your free White Spruce seedling, bring your "Tree for a Tree" coupon to the Glendale Yard Waste Site at 2625 E. Glendale Avenue during the following:

April 1 – April 18
Friday, Saturday,
Sunday & Monday
9:00 A.M. – 6:45 P.M.



HOMEOWNER REHAB LOAN PROGRAM

The City's Community and Economic Development Department operates a deferred repayment loan program for low- to moderate-income homeowners (e.g., family of four with income less than \$60,300/year) that need improvements done to their homes. Applications from eligible households will be accepted **March 21 through April 29, 2016**.

Applications will be available during this application period only. Applications can be found on the website, on the first floor of City Hall across from the Cashiers, or on the fifth floor of City Hall at the Customer Service area. Additional program and qualifying information is available on the website:

www.appleton.org (go to the Department of Community and Economic Development and then click on the link to the "Housing Rehab Loan"). For more information, please call 920-832-6468.

TERRACE PLANTING INFORMATION

Are you looking to do some landscaping on the terrace, the area between the sidewalk and the street? Special plantings on the terrace area require a Street Occupancy Permit so that safety and ordinance issues are addressed. The permit must be requested for plants in excess of 3 feet in height, hedges, rocks, railroad ties, loose stone, mulch or sand surfaces and vegetable plants. For questions or to request a permit, contact the Department of Public Works at 920-832-6474. This permit needs the approval of the Municipal Services Committee and Common Council. For tree planting and other terrace tree maintenance concerns, contact the City Forestry Division at 920-832-5580.

Follow Pubic Works:



Appleton DPW



City of Appleton Public Works

SPRING FLOODING

Spring weather can bring lots of rain. As a result there may be flooding in some areas. During flooding conditions, manhole covers can blow off due to surcharged sewers, leaving large holes in the street that may not be immediately visible. Please use extreme caution when driving or walking and keep children out of flooded areas.

SEWER BACKUPS

The City of Appleton would like to pass along a few facts that will hopefully assist you in understanding, and possibly preventing, the rare occurrence of a sewer backup. Flooding in the sewer system can be caused by blockage in the sewer lines or by infiltration of surface water during storms. The City does everything possible to prevent this problem, but flooding of sewer lines may still occasionally occur. City ordinance currently requires installation of a backflow preventer in the service line connecting a new building to the City sewer system. Existing buildings are not required to provide such a device, but the City strongly recommends that owners consider retrofitting backflow preventers in existing buildings.

Did you know?

- A backflow preventer is a mechanical means whereby flooding in the sanitary sewer system is prevented from backing up into your basement or building.
- Most homeowner's insurance policies do not pay for sewer backups.
- The City does not pay for damages caused by sewer backups unless the backup is shown to be caused by City negligence, so most of these claims are denied.

What can you do?

- Install a sewer backflow preventer.
 - Call your insurance agent regarding your coverage.
- Call the City Plumbing Inspector at 920-832-6411 with questions.

CLEANING OUR STREETS

Many of our storm sewers lead directly to the Fox River while some lead to retention ponds, which then lead to the river. Therefore anything placed in the street is in reality being put into the river as well. A cleaner street means a cleaner river, a cleaner lake and a cleaner drinking water source. Washing a car, blown grass clippings, paper, trash, dog droppings, antifreeze, gas and motor oil are all unwanted materials flushed into the street and down the storm sewer when it rains. Please help keep our waterways clean by helping to reduce the 3,059 tons of street sweeping the City removes each year.

Remember that in spring, no yard waste should be raked into the street. See collection information on page 10.

JUNETEENTH CELEBRATION

You are invited to Appleton's 7th Annual Juneteenth Celebration sponsored by the City and African Heritage, Inc. Join us on Sunday, June 19, from noon to 6 p.m. at Appleton City Park for music, children's village, food, vendors and more! Questions? Contact Kathy Flores at 920-832-1564.

Outagamie County Recycling Guidelines

PLASTIC:

ACCEPT

- All Plastic Bottles & Containers:
 - Soda, Water & Other Drink Bottles
 - Food & Household Bottles, Jars and Jugs
 - Dairy Containers & Lids
 - Produce, Bakery & Deli Containers

DO NOT ACCEPT

- No Plastic Bags, Wrap or Film
- No Motor Oil Bottles
- No Styrofoam

GUIDELINES:

- Empty and rinse all bottles and containers
- Remove and discard all screw caps



PAPER:

ACCEPT

- Newspapers & Inserts
- Cardboard & Paperboard (cereal & cracker boxes)
- Junk Mail & Office Paper
- Milk, Juice & Soup Cartons
- Phonebooks, Books, Magazines & Catalogs

DO NOT ACCEPT

- No Paper Contaminated by Food or Grease
- No Tissue
- No Gift Wrap

GUIDELINES:

- Flatten and cut cardboard to no larger than 2' X 2'
- Place shredded paper in paper bag, secure and label



METAL AND GLASS:

ACCEPT

- Aluminum Bottles & Cans
- Steel, Tin & Bi-metal Cans
- Empty Aerosol Cans
- Food & Beverage Glass Bottles and Jars

DO NOT ACCEPT

- No Aluminum Pans or Foil
- No Empty Paint Cans

GUIDELINES:

- Empty and rinse all bottles and containers
- Remove and discard all screw caps



HEALTH DEPARTMENT INFORMATION

VACCINATION INFORMATION

Protecting your family against preventable communicable diseases begins with fully vaccinated children. Appleton residents who have no insurance or are on Medical Assistance (Badger Care) are encouraged to call 920-832-6429 to schedule an appointment. Interpreter assisted clinics are offered the afternoon of the second Wednesday of each month. If you have private insurance coverage, per State guidelines, contact your primary care provider for immunizations. Children under 18 years of age must be with a parent or guardian. Bring your child's immunization record with you when you come to the clinic. A \$5 donation is requested; however, no one is refused service if unable to donate.

West Nile Virus (WNV)

Beginning May 1 through October 31, residents are encouraged to report any sick or dead crows, ravens or blue jays to the Appleton Health Department (920-832-6429) or the WNV hotline (1-800-433-1610). To learn more about WNV, visit www.appleton.org and type in West Nile Virus in the search bar. Avoiding mosquito bites prevents getting WNV. Use insect repellants that contain DEET, stay indoors during dawn and dusk (peak times for mosquito activity), or wear long sleeve shirts and long pants. You can also reduce mosquito populations by eliminating sources of standing water where they breed (old tires, buckets and clogged roof gutters). Change the water in bird baths every three days.

HEALTH INSPECTIONS ARE ONLINE!

Restaurant and Retail Food Store inspection reports are now online! Visit www.appleton.org/online-services.

"Like" us on Facebook!

Visit us at www.facebook.com/appletonhealthdepartment to learn about what's happening with the Appleton Health Department and receive updates with tips on personal safety, healthy living and more!



WHAT'S HAPPENING AT THE LIBRARY?

The Appleton Public Library offers a variety of services, classes, events and digital content. For more information please visit our website at www.apl.org or stop by any service desk.

CHILDREN'S SERVICES

Stop by for our science, technology, engineering, art and math based class, **Full S.T.E.A.M. Ahead**. Help your child develop pre-reading skills, social skills, confidence through interactive, play-centered learning at **Play and Learn**. For more information about services, classes or events for children and families, please visit www.apl.org/kids or stop by the Children's Services desk.

TEEN SERVICES

Check out our **Teen Night** featuring a different program every Tuesday. For more information about classes, events or services for teens, please visit www.apl.org/teen or stop by the second floor service desk.

ADULT SERVICES

Catch a new flick at **Thursday Afternoon @ The Movies**, the first three Thursdays of the month. Listen to local artists at the **Music @ The Library** series. We also offers free one-on-one help with computers, tablets, smart phones and more. For more information about classes, events and services for adults, please visit www.apl.org.

DIGITAL CONTENT

Have you had the chance to check out our digital branch? We offer free access to over 85 digital resources. Some of our popular online resources are: **Zinio** – where you'll find over 100 popular and specialty magazines, **Indieflix** – access to thousands of independent films from both the US and around the world, and **Mango** – a language learning service that offers fun and interactive lessons. For more information about our digital resources, please visit www.apl.org or stop by any service desk.

THINK OUTSIDE THE CAR

Let Valley Transit be your safe and reliable way to get around the Fox Cities. To plan your bus trip, just visit www.myvalleytransit.com. You can even text from your bus stop to get real time bus arrival information.

Kids, don't forget you can ride Valley Transit for only 75¢ a ride or get a 30-Day unlimited ride bus pass for only \$22. Visit www.myvalleytransit.com or call 920-832-5800 for more information.



ANIMAL LICENSES ARE REQUIRED FOR CATS AND DOGS

All cats and dogs must be licensed and rabies vaccinated by age 5 months. Animals 5 months and older that are new to the city must be licensed **within 30 days of residing in the city**. No person or household shall keep more than 6 animals, the maximum number of dogs being 3, the maximum number of rabbits being 2. **Licenses must be renewed each year**. Please visit our website at www.appleton.org for more information. The current license fees are as follows:

Regular license fees Jan. 1 through Mar. 31

***With additional late fee on or after Apr. 1 (see note below)**

Spayed/Neutered - \$6

Spayed/Neutered - \$11

Unaltered - \$11

Unaltered - \$16

*Please note: a late fee of \$5 per animal (see above amounts) will be added to regular fee amounts if owners have not licensed their animal/s (age 5 months that have resided in the city for more than 30 days) by the March 31 deadline.

Is your kitten/puppy eligible for the prorated license fee? If your pet is 5 months of age or younger **and** the date you complete your application is on or after July 1, your prorated amount is as follows:

Prorated fees for kittens/puppies July 1 through Nov. 15

Spayed/Neutered - \$3

Unaltered - \$5.50

MAIL IN APPLICATION ON REVERSE SIDE. Questions? Please call Animal Control at 920-832-6414.



FIRE DEPARTMENT

Outdoor Fireplace Permits

With the exception of fires fueled by natural gas, propane, and charcoal, a permit must be obtained from the Fire Department prior to having any outdoor fire. Residents are encouraged to apply for permits at www.appleton.org. Permits are also available at any of the City's six fire stations (addresses on page 6). Type of permits and payment options include:



- Daily (single use) \$15 (requires inspection)
- Seasonal (New) \$30 (Jan. 1 – Dec. 31) (requires inspection)
- Seasonal (Renewal) \$30 (Jan. 1 – Dec. 31)
- Payment by cash or check (payable to "City of Appleton") or by credit card using the on-line application process.

Carbon Monoxide and Smoke Detectors

Please test your carbon monoxide and smoke detectors monthly and don't forget to change the batteries in each of the units when you change your clocks in the spring and fall. Be Fire Smart! Fire is Everyone's Fight!

Follow Appleton Fire Department: Appleton DPW City of Appleton Public Works

HOW CAN I KNOW WHAT IS GOING ON WITH THE APPLETON POLICE DEPARTMENT?

For several years we have used social media as a way to expand our opportunities to interact with the community. Through our social media use, we attempt to put out helpful information in a timely manner as well as educate, communicate, and actively involve our community in aspects of our day-to-day operations. The Appleton Police Department can be found on Facebook (Appleton Police Department) and Twitter (@AppletonPD_WI). We also have a free phone app available for iPhone and Android products (type in Appleton Police Department). Get more information at www.appleton.org/residents/police.

Aside from calling 911 or our non-emergency number (920-832-5500), we offer Text-A-Tip to anyone wanting to remain anonymous while providing information on crimes, suspicious activity, drugs or gangs. By texting **CRIMES** (274-637) and adding the keyword **APDTIPS** to the start of the message, that information will be delivered anonymously to the Police Department.

The same software also allows people to get alerts directly to their smartphone or e-mail. Sign up for the alerts on the Appleton Police Department's page at www.appleton.org. Questions regarding the Appleton Police Department's use of social media can be directed to Sgt. Dave Lund at 920-832-5509 or by e-mail at david.lund@appleton.org.

ULTRAVIOLET LIGHT DISINFECTION AT THE CITY'S WATER PLANT

The Environmental Protection Agency (EPA) established new treatment standards to protect public health from Cryptosporidium and Giardia in drinking water. To meet the standards a technical advisory group was established to review and recommend a regulatory approved industry alternative process. The group recommended using an ultraviolet (UV) light process as the means to inactivate Cryptosporidium and Giardia.

How does UV work? Microorganisms in the water are exposed to UV light when they pass by specially designed lamps housed in UV reactors. The UV energy instantly damages the organisms' genetic material (DNA). Unable to reproduce, the microorganisms no longer pose a health risk.

The City's water plant has now upgraded to the UV technology. In addition to Cryptosporidium and Giardia, UV is also effective against other pathogens including streptococcus, cholera, hepatitis A, polio, and rotavirus. The technology does not change the finished drinking water aesthetics (color, taste or odor), and it is a cost-effective technology with low operation costs.

Questions regarding this report? Please contact Director of Utilities Chris Shaw at 920-997-4200 or chris.shaw@appleton.org.

CITY OF APPLETON – MAIL IN APPLICATION FOR CAT/DOG LICENSE

Owner Name: _____ Phone: _____

Owner Name: _____ Phone: _____

Address: _____ County in which you live: _____

Animal Name: _____ Breed: _____ **Cat only:** Long Hair Medium Short

Color: _____ Sex: M F / Neutered Spayed Unaltered

Date of Rabies Shot: _____ Year of Expiration: _____

Veterinary Clinic: _____ Clinic Phone #: _____

***Neutered/Spayed Pet \$6**

***Unaltered Pet \$11**

(*see fee assessment on reverse)

Complete application and mail with valid rabies certificate, proof of sterilization and check (do not send cash). Make checks payable to City of Appleton. For more than one pet, make additional copies of this form. **Enclose a business size self-addressed, stamped envelope.** Rabies certificates, proof of sterilization documents and your license/s will be returned.

Licenses for the upcoming year **are not available before December 15 of each year.** For more information contact the Appleton Police Department at 920-832-5500 or visit our website at: www.appleton.org/i/d/police/animallicense11.pdf.

MAIL APPLICATIONS TO: Appleton Police Department, 222 S. Walnut Street, Appleton, WI 54911-5899, Attn: Animal Control



APPLETON PARKS & RECREATION

Summer & Fall Programs & Activities



The Appleton Parks and Recreation is looking forward to another summer and fall full of activities for all ages and abilities. In the following pages you will find information on the great services, facilities and programs offered by our department. You will read about new programs and activities, park improvement projects, and expanded programs at Reid Golf Course. As you browse through the guide, we hope you find programs that interest you and take the time to get out and join us in our continued pursuit of excellent community health! Please visit our Facebook page (search Appleton Parks and Recreation) and our website often for the latest program and special event information!



Parks & Recreation Customer Service

Phone: 920-832-5905
 Information/Cancellation Line: 920-832-3900
 Office hours: 8:00 a.m. - 4:30 p.m., Monday-Friday
 Contact us at: aprd@appleton.org
 Online program & class registration at:
www.appletonparkandrec.org



Mailing address: P.O. Box 1976, Appleton WI 54912-1976

APPLETON PARKS AND RECREATION
WEBSITE: www.appletonparkandrec.org



at Appleton Parks & Recreation for news and program updates!



TABLE OF CONTENTS

Special Events & Trips. 15-17
 Youth Activities. 17-20
 Preschool & Early Childhood. 18-21
 Summer Camps & Workshops 20, 22, 24-27
 Summer & Fall Dance. 21-23, 30
 Youth & Adult Sports. 24-29
 Fitness & Active Adults 30-33
 Aquatics. 34-43
 Parks, Pavilions & Trails 44, 46-47
 Reid Golf Course 45, 51
 Community Partners 44, 49
 Swim Pass Form, Registration Info & Form. . . . 52-54

PHONE NUMBERS

Parks and Recreation. 920-832-5905
 Reid Golf Course. 920-832-5926
 Other City Services. 920-832-6173

APPLETON KIDS FUN RUNS

Appleton Kids Fun Runs provide children 2-14 an opportunity to participate in a non-competitive event open to all levels and abilities. Participating children will experience the positive impact of a fun, healthy, fitness-focused series of events centered on self-esteem and physical activity. Fun runs are safe, encouraging, and family focused.



DAY/DATES: Sundays; June 12, 26, July 17, August 7
TIME: 7:00 p.m.
LOCATION: Appleton Memorial Park (west of the Universal Playground)
AGES: 2-14 years old*
FEE: FREE

Registration prior to race day is preferred, however, there will be onsite registration. To register online go to www.appletonparkandrec.org, choose 'Programs & Activities', 'Special Events'! No rain dates will be scheduled.

Date	Class#	Date	Class#
June 12	366905-S1	July 17	366905-S3
June 26	366905-S2	August 7	366905-S4



*Children ages 4 & younger are to have an older sibling or adult run with them. All participants will receive a participation ribbon after each run. Children who participate in 3 out of the 4 runs will receive a t-shirt. Distances are approximate.

Ages 6 and younger: Run/Walk 1/4 mile **Ages 7-9: Run/Walk 1/2 mile** **Ages 10-14: Run/Walk 1 mile**

Come and share the joy of fitness with your entire family!

CHILDREN'S WEEK IN APPLETON!

Mark your calendar for July 24-30...

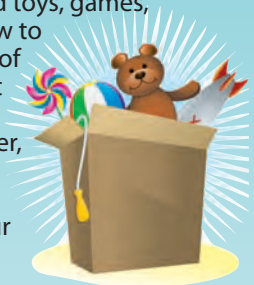
as we celebrate the children of Appleton with our annual Children's Week! Help us show children how special they are to their families, how city government connects to their everyday lives and how important they are to the future of the city. Watch the department's website www.appletonparkandrec.org and Facebook page for detailed information on activities scheduled for this week including the annual Playground Fair at Pierce Park, free swim days at Mead and Erb pools, our "Dive-In" movie event, ice skating, bowling and the annual Children's Parade.



4th Annual - KIDS

Rummage Sale

Join us at Pierce Park on Monday, July 25th from 9:00 a.m. to noon for the fourth annual Kid's Rummage Sale! Youth ages 5-17 may reserve a table to sell gently used toys, games, clothes, and accessories while learning how to interact with people and conduct the sale of goods, plus you keep the profits! Items not sold at the event will be donated to Goodwill of Northeast Wisconsin. To register, go to www.appletonparkandrec.org (Class #363906-01). This event is free and open to the public so make sure to tell your friends! **Participants are limited to one table per family.**



CHILDREN'S WEEK July 24-30, 2016

PLAYGROUND FAIR! JULY 28 & 29

Join us at our Playground Fair as part of "Children's Week" in Appleton. This is the BIGGEST Parks and Recreation special event of the year!! Our energetic playground leaders and local businesses/organizations sponsor two fun-filled days of carnival games, the trackless train, new and exciting inflatables, great food and entertainment. Visit the prize redemption center and cash in your tickets for fun prizes to take home with you! If you are interested in volunteering, becoming a sponsor for the event, or for more information, call 920-832-3925. All ages are welcome and encouraged to attend!

DATES: Thursday, July 28, 2:00-8:00 p.m.
Friday, July 29, 2:00-8:00 p.m.

Friday only from 12:30-2:00 p.m. we will open the Fair to families with children with special needs

LOCATION: Pierce Park

FEE: \$5 = 1 wristband* & 1 punchcard**
\$2 = 1 punchcard**

*The wristband allows for unlimited use of all inflatable rides and attractions during the two-day fair;

**One (1) punchcard allows the holder the ability to play up to 10 carnival games.



7TH ANNUAL CHILDREN'S PARADE Wednesday, July 27, 6:00 p.m.

Any child 12 & under is welcome to march in this non-motorized parade. The parade will travel from Houdini Plaza down College Avenue and end with a reception for families at City Park. Registration is FREE but required!

Call 920-734-3226 for more information or visit www.buildingforkids.org.

MOVIE ON THE HILL Outdoor Movies

Free! Bring your blanket (no lawn chairs) and enjoy entertainment under the summer sky! Children's games start at 7:00 p.m. and the movie will begin at dusk (approx. 8:45 p.m.). Concessions are available.

LOCATION: Appleton Memorial Park Amphitheater



DATE:

Thursday, June 23

Friday, July 8

Thursday, July 21

Friday, August 5

MOVIE:

Minions

Hotel Transylvania 2

Inside Out

Star Wars: The Force Awakens

PLEASE NOTE: In the event of rain or stormy weather the movie may be cancelled. Please call the Information Line at 920-832-3900 after 5:00 p.m. for cancellation information.

THERE WILL BE NO RAIN DATES SCHEDULED.

OPEN CANOEING

Open canoeing is held on the beautiful Appleton Memorial Park pond immediately preceding Movie on the Hill nights, on a first come, first serve basis. Canoes, oars and personal floatation devices are provided. All participants **must** wear an approved U.S. Coast Guard life jacket and an adult must accompany children under ten years of age. Supervision will be provided, but instruction is not.

LOCATION: Appleton Memorial Park pond, meet at the pavilion

DATES: June 23, July 8, July 21, August 5

TIMES: 6:00-8:00 p.m.

FEES: Adults: \$2

Youth: \$1 (age 17 & under).

Fees collected on site.



PLAYGROUND ACTIVITIES

Are you looking for a way to keep your child active and entertained this summer? How about having them join us for our Playground Program? We will have two college-aged leaders at each of our fifteen sites ready to create an interactive and enjoyable summer for your child! Youth ages 7-15 are welcome to attend on a drop-in basis and participate in sports, games, special events, trips, creative crafts and much more throughout the summer. The more the merrier, so be sure to tell your friends! There are also exciting special events planned throughout the summer for our playground participants. These include Picnic in the Park, Mead Pool Play Day, Children's Week activities, Playground Fair, Breakfast in the Park, Dodgeball Tournament, the Amazing Race and much, much more! Visit your local playground site or our website at www.appletonparkandrec.org for further details.

The Playground Program will once again be participating in the summer food service program through the Appleton Area School District. Contact your site leader or Appleton Parks and Recreation for detailed information.

LOCATIONS:

Alicia Park

Erb Park

Highview Park

Jaycee Park

Peabody Park

Colony Oaks Park

Ferber School

Hoover Park

Kiwanis Park

Schaefer Park

Derks Parks

Green Meadows Park

Huntley School

Linwood Park

Vosters Park

DATES:

Monday, June 13-Thursday, August 11 (*no program July 4*)

DAYS/HOURS:

Monday - Thursday, 9:00 a.m.-12:00 p.m. & 1:00 p.m.-4:00 p.m.

FEE:

FREE with additional charges for bus trips and special events



APRD DAY AT THE BALLPARK!!

Join us for a fun family day with the Wisconsin Timber Rattlers! Our group will enjoy reserved group seating, reserved space for pre-game tailgating and games, and have access to exclusive game day "experiences" such as pre-game Catch & Throw on the field, a post-game autograph session with Timber Rattler players, and 20 lucky kids will even have an opportunity to take the field WITH Timber Rattler's players as part of the team's "Field of Dreams" promotion! Don't miss out!

DATE: Sunday, August 7, pre-game activities 11:00 a.m., 1:05 p.m. game time

AGE: ALL AGES WELCOME! **FEE:** \$10 per person, includes game ticket

Register online for our trips at www.appletonparkandrec.org



JUNIOR LEADER PROGRAM Ages 14-17

Appleton Parks and Recreation is proud to offer our VIP (Volunteer in Parks) Junior Leader Program. Make the most of your summer by becoming a Junior Leader to our summer playground program. This program is intended to offer young adults who are 14 years of age and older an opportunity to gain both experience and knowledge of the skills it takes to become a playground leader. VIP – Junior Leaders will assist the Playground Leaders in leading games, helping with crafts and setting a positive example for younger children. The program runs from June 13-August 11. Responsible teens must commit to volunteering a minimum of 6 hours per week. To become a Junior Leader, complete the application at www.appletonparkandrec.org. Application deadline is May 13, 2016. *Please note: each playground site is limited to two Junior Leaders.*



astronaut and make your own space rocket. **Location: Telulah Park Pavilion**

DR. SEUSS FUN – JUNE 24 – Get ready for rhyme time with all the classic Dr. Seuss favorites from Horton Hears a Who, the Foot Book, There’s a Wocket in my Pocket and more! Play the one fish, two fish sorting game, eat green eggs and ham and make a special hat like cat. **Location: Telulah Park Pavilion**

DOWN & DIRTY – JULY 8 – Let’s face it...kids like to get dirty. Instead of making the mess at your house, let us take care of it! Make sure your child comes dressed in old clothes and brings a towel because they are guaranteed to become a mess. **Location: Pierce Park Pavilion**

CIRCUS PARTY- JULY 15 – The circus is coming to town and your little one is going to be part of the big show! We will definitely do some “clowning around” during our time learning about the circus and having fun under the BIG TOP! **Location: Erb Park Pavilion**

LITTLE SCIENTIST – JULY 22 – We are bringing the wonders of science right to the park! From air, our animal friends and butterflies, to water, weather and worms, our session will captivate the curious nature of all who attend. We will be dabbling with many science experiments and igniting the little scientist in all our learners. **Location: Erb Park Pavilion**

SPORTS DAY FUN – JULY 29 – Children will have fun during this action packed class while we explore different sports (soccer, basketball, football, baseball) that are played. Basic skills will be taught while we learn about teamwork and have fun. **Location: Erb Park Pavilion**

NOISY – CRASH, BANG, BOOM! – AUGUST 5 – Think of all the noises we can make with our body (stomping our feet, clapping our hands, etc.). We are going to use this time to see what other noises we can make, how they can be amplified and how using different tools can make us hear different sounds. We will make instruments, explore sounds with cool props, and make some noise!! **Location: Telulah Park Pavilion**

OLYMPIC CHALLENGE DAY – AUGUST 12 – We are turning the park into our very own summer Olympics! We will run around the park with our Olympic torches, make Olympic rings and participate in a number of fun and creative Olympic events. Get ready to earn that gold medal! **Location: Telulah Park Pavilion**

FRIDAY FUN

Let your child explore our Friday Fun morning activities designed just for 3-6 year olds. Register individually for one or all of the classes. Participants must be appropriate age by the first day of class. **Fee: Each class is \$5 for residents and \$10 for non-residents**

SPACE ADVENTURES – JUNE 17	AGE	TIME	CLASS#
“To Infinity and Beyond”! Come join us as we explore outer space and the planets, stars and moon. Become an	3	9:00-9:55 a.m.	312311-01
	4	10:00-10:55 a.m.	312311-02
	4-6	11:00-11:55 a.m.	312311-03
DR. SEUSS FUN – JUNE 24	AGE	TIME	CLASS#
	3	9:00-9:55 a.m.	312312-01
	4	10:00-10:55 a.m.	312312-02
4-6	11:00-11:55 a.m.	312312-03	
DOWN & DIRTY – JULY 8	AGE	TIME	CLASS#
	3	9:00-9:55 a.m.	312313-01
	4	10:00-10:55 a.m.	312313-02
4-6	11:00-11:55 a.m.	312313-03	
CIRCUS PARTY- JULY 15	AGE	TIME	CLASS#
	3	9:00-9:55 a.m.	312314-01
	4	10:00-10:55 a.m.	312314-02
4-6	11:00-11:55 a.m.	312314-03	
LITTLE SCIENTIST – JULY 22	AGE	TIME	CLASS#
	3	9:00-9:55 a.m.	312315-01
	4	10:00-10:55 a.m.	312315-02
4-6	11:00-11:55 a.m.	312315-03	
SPORTS DAY FUN – JULY 29	AGE	TIME	CLASS#
	3	9:00-9:55 a.m.	312316-01
	4	10:00-10:55 a.m.	312316-02
4-6	11:00-11:55 a.m.	312316-03	
NOISY – CRASH, BANG, BOOM! – AUGUST 5	AGE	TIME	CLASS#
	3	9:00-9:55 a.m.	312317-01
	4	10:00-10:55 a.m.	312317-02
4-6	11:00-11:55 a.m.	312317-03	
OLYMPIC CHALLENGE DAY – AUGUST 12	AGE	TIME	CLASS#
	3	9:00-9:55 a.m.	312318-01
	4	10:00-10:55 a.m.	312318-02
4-6	11:00-11:55 a.m.	312318-03	

SUMMER PRESCHOOL LEARNING

LITTLE LEARNERS EXTRA

Little Learners Extra is a 4-week program offered during the summer to keep your child engaged and learning so they are ready for the fall. We will build upon our learning of numbers, letters, name recognition, shapes, and colors. We will explore art and music all while learning to use good social skills and manners.

LOCATION: City Center Studio 1, 2nd floor of City Center Plaza



CLASS	AGES	DAYS	DATES	TIME	RES/NON-RES	CLASS #
Little Learners Extra	4-5	TU, TH	June 21-July 21*	9:45-11:45 a.m.	\$40/\$65	311601-T1

*There will be no class July 5, 7.

BICYCLING PROGRAMS



URBAN RIDERS

Have fun exploring Appleton on two wheels with your friends! As an Urban Rider you'll learn bike handling skills, rules of the road, and build your confidence riding a bike! We will practice navigating intersections, roadways and changing lanes while riding to other neighborhoods, on the local trails, and other places you may want to bike to with your friends. Rides may include the Skatepark at Telulah Park, Mead Pool, trails and fun spots to pick up a cool treat or satisfy your sweet tooth. You may want to ride your bike to school every day after this camp!

Bring a helmet and a bike that is in good working condition. Highlights of this program include: learning more advanced bike handling skills, understanding your bike and how it works, route planning and rules of the road, learning how to fix a flat tire and more!

LOCATION: Erb Park, 1800 N. Morrison Street

CLASS	AGES	DAY	DATES	TIME	RES/NON-RES	CLASS #
Urban Riders	8-12	W	June 15-July 20*	5:30 - 7:00 p.m.	\$25/\$50	312309-T1

*There will be no class July 6.

BIKE RODEOS

The Bike Rodeo will teach your child the basic skills needed to bike safely on the road. Stations will include looking back without swerving, riding straight while missing potholes and crossing busy streets safely. Other stations may include seeing and being seen, chaos corner and riding safely out of a driveway. In addition, children will learn basic bicycle sizing and maintenance. Parents are strongly encouraged to participate so they too learn "cycling road sense." The May Bike Rodeo will have the Appleton Police and Fire departments there to help join in the fun and support May being Bike to School Month. This is a great opportunity for you and your child to learn safe bicycling together.

LOCATION: Bike Rodeo #1 – Mead Pool Parking Lot, 1430 E. John Street

Bike Rodeo #2 – Franklin Elementary School Playground, 2212 N. Jarchow Street

CLASS	AGES	DAY/DATE	TIME	RES/NON-RES	CLASS #
Bike Rodeo #1	4-9	Thursday, May 5	5:00 - 7:00 p.m.	Free	312308-01
Bike Rodeo #2	4-9	Wednesday, June 15	1:00 - 2:30 p.m.	Free	312308-02

*Event may end early/late depending on the number of participants

KARATE FUN

Join us as we partner with Karate America to offer this course for children ages 4 to 12. The exciting yet disciplined classes focus a child's attention while improving the student's ability to learn. Kids get the excitement and fun they desire, and parents get the discipline, confidence and respect they want for their child. No one sits on the bench! Each person is treated as an equal and is trained to the best of his/her ability and potential. The course is designed for students who have none or very little martial arts experience. Sign up today and experience all the benefits and fun of the martial arts!

LOCATIONS: Karate America: 220 W. Northland Avenue **OR** Karate America East: W3173 Springfield Drive

FEE: \$30 - new uniform included

	AGES	TIME	LOCATION	CLASS #
Summer Session I	4-6	9:30 - 10:00 a.m.	Northland Ave.	312821-W1
Wednesdays	7-12	10:15 - 10:45 a.m.	Northland Ave.	312821-W2
June 15 - July 6	4-12	9:00 - 9:30 a.m.	Springfield Dr.	312821-W3
Summer Session II	4-6	9:30 - 10:00 a.m.	Northland Ave.	312821-W5
Wednesdays	7-12	10:15 - 10:45 a.m.	Northland Ave.	312821-W6
July 27 - August 17	4-12	9:00 - 9:30 a.m.	Springfield Dr.	312821-W7
Fall Session I	4-6	5:15 - 5:45 p.m.	Northland Ave.	412821-H1
Thursdays	7-12	5:45 - 6:15 p.m.	Northland Ave.	412821-H2
September 8 - September 29	7-12	5:15 - 5:45 p.m.	Springfield Dr.	412821-H3
	4-6	6:00 - 6:30 p.m.	Springfield Dr.	412821-H4



CAMP APRD



Are you ready for a fun-filled weeklong adventure? Campers will enjoy the opportunity to participate in traditional day camp activities. A field trip is scheduled during each week of Camp APRD; all field trip costs have been built into the cost of the program. The costs that are included feature weekly trips to Mead or Erb Pools, archery, canoeing and an afternoon snack. Participants should bring a bag lunch each day. Parents/Guardians/Adults are responsible for transporting their child to and from camp each day. Children may not be dropped off/walk/bike to the program prior to staff arrival as an adult will need to sign children in and check children out. Weekly schedules and updates are emailed prior to the start of each camp session.

LOCATION: Appleton Memorial Park Pavilion, 1620 Witzke Blvd., Appleton **AGES:** 6-13
FEE: **Weeks 1-9:** \$85/week/resident, \$110/week/non-resident
Weeks 2-5 (Afternoons only option): \$35 + cost of trip/resident, \$60 + cost of trip/non-resident*
Early drop off (drop off between 7:30-8:00 a.m.) OR **Later pick up** (pick up between 4:00-4:30 p.m.): \$5/child/week
BOTH Early drop & pick up later: \$10/child/week

WEEK	DATES	BUS TRIP	CLASS #
1	June 6-10	Ledge View Nature Center	312302-01
2	June 13-17	Super Bowl	312302-02
3	June 20-24	Badger Sports Park	312302-03
4	June 27-July1	Extreme Air	312302-04
5	July 11-15	Barlow Planetarium and Weis Museum	312302-05
6	July 18-22	Pollock Pool	312302-06
7	July 25-29	Woodland Dunes Nature Center and Preserve	312302-07
8	August 1-5	Bay Beach and Wildlife Sanctuary	312302-08
9	August 8-12	Lambeau Stadium Tour and Hall of Fame	312302-09

**See online registration for class numbers.*

KIDSTAGE®

This summer KidsStage® Camps will have participants working on acting exercises and theatre skills daily as they prepare for the end of the week performance of Walt Disney's Snow White and the Seven Dwarfs®. Join us as we bring life to the enchanting tale of the beautiful, gentle Snow White and her jealous stepmother, the Queen. Sent on a perilous journey into the woods, Snow White befriends the forest animals and the delightful seven dwarfs in the classic tale. Participants will be divided into groups based on age and skill level. The KidsStage® Camp kids will perform in the last hour of the last day of camp!



Join KidStage® this fall as participants will be performing Willy Wonka and the Chocolate Factory®. The delicious adventures experienced by Charlie Bucket on his visit to Willy Wonka's mysterious chocolate factory light up the stage in this captivating adaptation of Roald Dahl's fantastical tale. Featuring the enchanting songs from the 1971 film starring Gene Wilder in addition to a host of fun new songs, Roald Dahl's Willy Wonka JR. is a scumdidilyumptious musical guaranteed to delight everyone's sweet tooth. Participants will be divided into groups based on age and skill level. At the end of the session a showcase will be held at the Jane Bergstrom Theatre at St. Mary Central High School, December 3, 4. Dress rehearsals will be held on an alternative date of normal class time. Details of the dress rehearsals and showcase times will be provided by week 5 of the session.

LOCATIONS: Pierce Park Pavilion, 1035 W. Prospect Avenue Appleton Public Library (APL), 225 N. Oneida Street

CLASS	AGES	DATES	DAY(S)	TIME	LOCATION	FEE	CLASS #
KidStage® Camp	5-12	July 11-15	M-F	1:30-3:30 p.m.	Pierce Park	\$80	312322-J1
KidStage® Camp	5-12	August 1-5	M-F	1:30-3:30 p.m.	Pierce Park	\$80	312322-J3
Willy Wonka and the Chocolate Factory®	5-12	Sept. 26-Nov. 28	Monday	6:00-7:00 p.m.	APL-Room C	\$80	412322-01

PRESCHOOL LEARNING



Little Learners – Are you looking to help your child take that jump towards independence? Little Learners includes developmentally appropriate activities to give your child the skills they need to start 4K & Kindergarten. We will explore art, music, movement and games while learning to use good social skills and manners. Age appropriate 4K & Kindergarten fundamentals including letters, numbers, shapes and colors are introduced each week. Be the “Star of the Week” and learn about your classmates. This is a great opportunity for your child to practice skills needed for school while making new friends.

Guidelines – Parents may leave the premises during class. All children must be toilet trained and use the bathroom independently and **MUST** be 3½ years old by the first day of class.

2 days/week = 25 classes or 3 days/week = 37 classes

***No classes October 26-28 and November 21-25**

LITTLE LEARNERS GET TO KNOW YOU – We will have an Open House for you and your Little Learner to visit the room and meet the teachers. This will be held Friday, September 9 from 9:45-11:45 a.m. During this time you can turn in the paperwork we will require as well as let your child explore the room in hopes of familiarizing them with their new learning environment.

CLASS	AGES	DAYS	DATES	TIME	LOCATION	RES/NON-RES	CLASS #
Little Learners	3½-5	M, W	Sept. 12-Dec. 14	9:45-11:45 a.m.	Studio 1	\$125/\$150	411601-M1
Little Learners	3½-5	M, W, F	Sept. 12-Dec. 16	9:45-11:45 a.m.	Studio 1	\$185/\$210	411601-M2
Little Learners	3½-5	TU, TH	Sept. 13-Dec. 15	9:45-11:45 a.m.	Studio 1	\$125/\$150	411601-T1
Little Learners	3½-5	TU, TH, F	Sept. 13-Dec. 16	9:45-11:45 a.m.	Studio 1	\$185/\$210	411601-T2

Teacher & Me – Children explore their first preschool class independently! Make projects, sing songs, hear stories and play with friends in an active learning environment. This is a great opportunity for young children to begin practicing introductory school skills on their own. Guidelines: Children must be able to separate from their parent/caregiver during class. Parent/caregiver needs to remain at the studios and be available during class time. ***No class November 23**

CLASS	AGES	DAY	DATES	TIME	LOCATION	RES/NON-RES	CLASS #
Teacher & Me	2½-3½	W	Oct. 5-Dec. 7	9:00-9:30 a.m.	Studio 1	\$45/\$70	411608-F1

DANCE & TUMBLING CLASSES



Tap-Jazz-Ballet Intro Dance Classes – These are introductory classes to learn the beginning movements and terminology of dance. Students are welcomed into the world of dance by experienced teachers and are encouraged to learn while having fun. Instruction includes progressions, center work and learning a dance featuring rhythm and movement to a variety of music. Attire: leotard or tank top with tights or jazz pants, favorite tutus accepted! Ballet slippers (optional) and tap shoes.



Tumbling – Your child will develop muscle control, coordination, balance, strength, flexibility and poise while learning basic tumbling moves and having fun! Attire: comfortable clothes and bare feet.

No class October 29, November 26

CLASS	AGES	DAY	DATES	TIME	LOCATION	RES/NON-RES	CLASS #
Tap-Jazz-Ballet Intro	3-5	SA	Oct. 1-Dec. 10	9:00-9:30 a.m.	Studio 1	\$45/\$70	411603-S1
Tap-Jazz-Ballet Intro	3-6	SA	Oct. 1-Dec. 10	9:35-10:05 a.m.	Studio 1	\$45/\$70	411603-S2
Tap-Jazz-Ballet Intro	3-7	SA	Oct. 1-Dec. 10	10:10-10:40 a.m.	Studio 1	\$45/\$70	411603-S3
Tumbling	3-5	SA	Oct. 1-Dec. 10	9:00-9:30 a.m.	Studio 2	\$45/\$70	411614-S1
Tumbling	3-6	SA	Oct. 1-Dec. 10	9:35-10:05 a.m.	Studio 2	\$45/\$70	411614-S2
Tumbling	3-7	SA	Oct. 1-Dec. 10	10:10-10:40 a.m.	Studio 2	\$45/\$70	411614-S3

All classes listed above are held in the City Center Studios located on the 2nd floor of City Center. Metered parking is available in the Blue Ramp. Enter the ramp on Appleton Street between Washington Street and College Avenue. Park on or near level 1B or 2A, follow signs to the Studios.

Handouts will be given to each class on the first day with information specific to that class – i.e., no class dates, etc.

SUMMER DANCE & ACROBATIC PROGRAMS



Try something new! These workshop style classes are offered for beginner students to learn new skills and intermediate/advanced students to have some fun trying out our new combinations. Students must be the age listed by the first day of class. Classes are taught by our experienced and professional dance staff.

Beginner-Students who are new to dance or have had 1-2 years of dance instruction.
Intermediate/Advanced-Students who have had 2+ years of dance instruction.

Attire: Black jazz or yoga pants and leotards or tank tops are the required attire for all dance students. Acrobat students should wear shorts and a top that stays tucked in.

Shoes: Tap shoes, jazz & hip-hop black jazz sneakers or ballet slippers. The teacher will discuss with new students the shoes to wear at first class. Acrobat students are barefoot.

DATES: Week of June 13–Week of July 25 (6 weeks) - No class July 4 & 5

LOCATION: City Center Plaza, 2nd floor, Studios 1 & 2

FEE: Youth: \$30/resident, \$55/non-resident



CLASS	LEVEL	AGES	DAY	TIME	LOCATION	CLASS#
Acrobatics	Advanced	6-17	Tuesday	6:55-7:25 p.m.	Studio 2	312105-T6
Acrobatics	Beginner	4-6	Tuesday	4:00-4:30 p.m.	Studio 2	312105-T1
Acrobatics	Beginner	5-7	Tuesday	4:35-5:05 p.m.	Studio 2	312105-T2
Acrobatics	Beginner 2/3	8-12	Tuesday	5:10-5:40 p.m.	Studio 2	312105-T3
Acrobatics	Intermediate	9-14	Tuesday	5:45-6:15 p.m.	Studio 2	312105-T4
Acrobatics	Intermediate 2/3	6-17	Tuesday	6:20-6:50 p.m.	Studio 2	312105-T5
Ballet	Beginner	5-7	Monday	4:00-4:30 p.m.	Studio 1	312106-M1
Ballet	Beginner 2/3	8-12	Monday	4:35-5:05 p.m.	Studio 1	312106-M2
Ballet	Inter/Adv/Tech	9-14	Monday	5:10-5:40 p.m.	Studio 1	312106-M3
Hip Hop	Beginner 2/3	7-12	Tuesday	6:20-6:50 p.m.	Studio 1	312103-T1
Hip Hop	Intermediate/Advanced	12-17	Tuesday	6:55-7:35 p.m.	Studio 1	312103-T2
Jazz	Beginner	5-7	Tuesday	4:00-4:30 p.m.	Studio 1	312101-T1
Jazz	Intermediate/Advanced	6-17	Monday	6:55-7:25 p.m.	Studio 1	312101-M1
Lyrical	Beginner	8-15	Tuesday	4:35-5:05 p.m.	Studio 1	312102-T1
Lyrical	Intermediate/Advanced	6-17	Monday	6:20-6:50 p.m.	Studio 1	312102-M3
Pointe	BY APPROVAL ONLY	6-17	Monday	5:45-6:15 p.m.	Studio 1	312106-M4
Tap	Beginner/Intermediate	6-12	Tuesday	5:45-6:15 p.m.	Studio 1	312104-T1
Tiny Tendu	Beginner	3-5	Tuesday	5:10-5:40 p.m.	Studio 1	311106-T1

Dance and Acrobatic Parent Information Meetings:

Tuesday, September 6 and Thursday, September 8 from 5:30-6:30 p.m.

Location: Studio 2A

Please attend one of the meetings to learn about Appleton Parks and Recreation Unity Dance Academy Dance and Acrobatic Recital program. We will be sharing information in regards to the attire to be worn in classes, meet the instructors, what is all part of this program (costumes, photos, recital, etc.), an opportunity to order proper shoes and tights for your child's class as well as order Unity Dance Academy apparel.

The meetings are not mandatory; however, we highly encourage all to attend whether you are new to the program or a seasoned veteran.



Unity Dance Academy...where everyone belongs!



FALL DANCE & ACROBATIC PROGRAMS 2016-2017



Learn from our qualified teachers! All students perform in the recital scheduled for March 2017. Participants should anticipate an additional cost for costumes of approximately \$60-\$85, payable in early October. Skill level descriptions and attire requirements are available at www.appletonparkandrec.org, Programs & Activities, Unity Dance Academy.

- DATES:** Mondays, Sept. 12–Dec. 19, Jan. 2–Mar. 6 (no class Nov. 21, Dec. 26, Jan. 23, Feb. 20)
 Tuesdays, Sept. 13–Dec. 20, Jan. 3–Mar. 7 (no class Nov. 22, Dec. 27)
 Wednesday, Sept. 14–Dec. 21, Jan. 4–Mar. 8 (no class Nov. 23, Dec. 28)
 Thursday, Sept. 15–Dec. 22, Jan. 5–Mar. 9 (no class Oct. 27, Nov. 24, Dec. 29)
- LOCATION:** City Center Plaza, 2nd floor, Studios 1, 2 & 3
- FEE:** Youth Beginner classes–\$80/resident, \$105/non-resident
 *Youth Intermediate & Advanced classes–\$95/resident, \$120/non-resident



**Registration received after August 14 will require an additional \$10 fee.
 Final deadline for all registration is September 18!**

CLASS	LEVEL	AGES	DAY	TIME	LOCATION	CLASS#
Acrobatics	Beginner	4-6	Thursday	4:45-5:15 p.m.	Studio 3	412105-H1
Acrobatics	Beginner 2	5-8	Thursday	5:20-5:50 p.m.	Studio 3	412105-H2
Acrobatics	Beginner 3	6-8	Thursday	5:55-6:25 p.m.	Studio 3	412105-H3
Acrobatics*	Intermediate	7-10	Thursday	6:30-7:10 p.m.	Studio 3	412105-H4
Acrobatics*	Intermediate 2/3	8-14	Thursday	7:15-7:55 p.m.	Studio 3	412105-H5
Acrobatics*	Advanced	9-17	Thursday	8:00-8:40 p.m.	Studio 3	412105-H6
Ballet	Beginner	5-7	Tuesday	4:00-4:30 p.m.	Studio 2	412106-T1
Ballet	Beginner	4-6	Monday	4:30-5:00 p.m.	Studio 1	412106-M1
Ballet	Beginner 2/3	6-9	Monday	5:05-5:35 p.m.	Studio 1	412106-M2
Ballet Pointe	Pointe I	8-14	Thursday	6:45-7:25 p.m.	Studio 2	412106-H4
Ballet Pointe*	Pointe II	9-16	Thursday	8:15-8:55 p.m.	Studio 2	412106-H6
Ballet Pointe*	Pointe III	14-17	Tuesday	5:10-5:50 p.m.	Studio 2	412106-T2
Ballet*	Intermediate Technique	8-12	Thursday	6:00-6:40 p.m.	Studio 2	412106-H3
Ballet*	Advanced Technique 2	9-16	Thursday	7:30-8:10 p.m.	Studio 2	412106-H5
Hip Hop	Beginner	5-7	Monday	3:45-4:15 p.m.	Studio 2	412103-M1
Hip Hop	Beginner 2/3	6-9	Monday	4:20-4:50 p.m.	Studio 2	412103-M2
Hip Hop*	Intermediate 1/2/3	8-12	Monday	4:55-5:25 p.m.	Studio 2	412103-M3
Hip Hop	Da Boyz (boys only!)	6-17	Thursday	5:30-6:00 p.m.	Studio 1	412103-H1
Hip Hop*	Advanced/Advanced 2	12-17	Thursday	8:15-8:55 p.m.	Studio 1	412103-H3
Hip Hop*	Advanced 3	14-17	Tuesday	6:40-7:20 p.m.	Studio 2	412103-T1
Hip Hop*	Intermediate 2/3	10-15	Thursday	6:50-7:30 p.m.	Studio 1	412103-H2
Jazz*	Intermediate 2/3	12-15	Thursday	7:05-7:45 p.m.	Studio 3	412101-T4
Jazz*	Advanced	12-15	Tuesday	7:25-8:05 p.m.	Studio 1	412101-T5
Jazz	Beginner	4-6	Tuesday	4:00-4:30 p.m.	Studio 3	412101-T1
Jazz	Beginner 2/3	6-10	Tuesday	5:45-6:15 p.m.	Studio 3	412101-T2
Jazz*	Advanced 2	10-15	Monday	6:15-6:55 p.m.	Studio 1	412101-M2
Jazz*	Intermediate	10-14	Tuesday	6:20-7:00 p.m.	Studio 3	412101-T3
Jazz*	Advanced 3	14-17	Tuesday	8:20-9:00 p.m.	Studio 2	412101-T6
Lyrical*	Advanced 2/3	14-17	Tuesday	7:25-8:15 p.m.	Studio 2	412102-T4
Lyrical	Beginner	8-12	Tuesday	4:35-5:05 p.m.	Studio 2	412102-T1
Lyrical	Beginner 2	10-15	Monday	5:40-6:10 p.m.	Studio 1	412102-M1
Lyrical*	Intermediate	10-15	Tuesday	5:55-6:35 p.m.	Studio 1	412102-T3
Lyrical*	Intermediate 2/3	14-17	Tuesday	6:40-7:20 p.m.	Studio 1	412102-T5
Lyrical*	Intermediate 3	9-14	Tuesday	5:55-6:35 p.m.	Studio 2	412102-T2
Lyrical*	Advanced	12-15	Tuesday	8:10-8:50 p.m.	Studio 1	412102-T6
Middle Eastern	Beginner	7-11	Wednesday	6:00-6:30 p.m.	Studio 2	412111-W1
Middle Eastern	Beginner	12-15	Wednesday	6:35-7:05 p.m.	Studio 2	412111-W2
Tap	Beginner	4-6	Tuesday	4:35-5:05 p.m.	Studio 3	412104-T1
Tap	Beginner 2/3	6-10	Tuesday	5:10-5:40 p.m.	Studio 3	412104-T2
Tap*	Advanced 2/3	12-17	Thursday	7:35-8:15 p.m.	Studio 1	412104-H3
Tap*	Intermediate 3	10-15	Thursday	6:05-6:45 p.m.	Studio 1	412104-H2
Tap Funk*	Intermediate/Advanced	12-17	Monday	7:00-7:40 p.m.	Studio 1	412112-M1

See previous page for information on Parent Meetings being held in early September for the recital program.

YOUTH BASEBALL CAMPS

Our Youth Baseball Camp is a fun, inclusive way for children to develop their baseball skills, or experience "America's Pastime" for the first time! This camp will provide a well-rounded introduction to the basic fundamentals of baseball, with a focus on throwing, catching, fielding, batting, base running and teamwork, and will prepare them to participate in our recreational baseball/softball leagues. Game-like situations will be used to explain rules and strategy, and age appropriate equipment along with experienced instructors will make this camp both safe and FUN!

FEE: \$15/resident, \$40/non-resident

WHAT TO BRING: Baseball glove, athletic shoes and water bottle



AGES	DAY	DATES	TIME	LOCATION	CLASS #
4-5	Wednesday	June 15 – July 13	1:00-1:55 p.m.	AMP-Miracle Field	312303-H1
4-5	Wednesday	June 15 – July 13	2:00-2:55 p.m.	AMP-Miracle Field	312303-H2
6-8	Wednesday	June 15 – July 13	3:00-3:55 p.m.	AMP-Miracle Field	312303-H3
4-5	Thursday	June 16 – July 14	9:00-9:55 a.m.	AMP-Miracle Field	312303-H4
4-5	Thursday	June 16 – July 14	10:00-10:55 a.m.	AMP-Miracle Field	312303-H5
6-8	Thursday	June 16 – July 14	11:00-11:55 a.m.	AMP-Miracle Field	312303-H6

* There will be no class the week of July 4 (AMP=Appleton Memorial Park)

**Registration is based on the age your child will be on the first day of camp.

YOUTH SOCCER CAMPS

Soccer is a GREAT way to introduce a child to the joy of sports, with skills and concepts that are simple for kids to grasp and develop. This introductory/beginner level camp will teach the basic fundamentals of soccer through fun, interactive games and activities, and will help prepare kids to participate in our recreational soccer leagues. Game-like situations will be used to introduce basic rules and strategy, and age appropriate equipment and experienced instructors will make this camp both safe and FUN!

FEE: \$15/resident, \$40/non-resident

WHAT TO BRING: Athletic shoes, water bottle



AGES	DAY	DATES	TIME	LOCATION	CLASS #
4-5	Tuesday	June 14-July 12	1:00-1:55 p.m.	Erb Park	312304-E1
4-5	Tuesday	June 14-July 12	2:00-2:55 p.m.	Erb Park	312304-E2
6-8	Tuesday	June 14-July 12	3:00-3:55 p.m.	Erb Park	312304-E3
4-5	Friday	June 17-July 15	9:00-9:55 a.m.	Erb Park	312304-P1
4-5	Friday	June 17-July 15	10:00-10:55 a.m.	Erb Park	312304-P2
6-8	Friday	June 17-July 15	11:00-11:55 a.m.	Erb Park	312304-P3

* There will be no class the week of July 4.

**Registration is based on the age your child will be on the first day of camp.

CHALLENGER SPORTS BRITISH SOCCER CAMPS

Challenger Sports British Soccer Camp is one of the most popular soccer camps in the country, and we are excited to partner with Challenger once again to host two exciting camps this summer here in Appleton! In addition to helping develop your child's core soccer skills and understanding of the game, Challenger's philosophy encourages children to: become independent learners, develop socially, and to better understand the meaning of respect, responsibility, integrity, sportsmanship and leadership. Challenger Sports British Soccer Camp has identified the key techniques and skills that players need to work on and master to reach their true potential.

DATES: Camp 1 – July 18 through 22 Camp 2 – August 15 through 19

LOCATION: Appleton Alliance Church Soccer Fields at 2693 W. Grand Chute Boulevard

INCLUSIONS: All participants will receive a Challenger soccer ball and shirt!



AGES	PROGRAM	TIME	COST	FORMAT
3-4	First Kicks	5:00-6:00 p.m.	\$78	A fun intro to the very basic elements of soccer
4-6	MiniSoccer	6:00-7:30 p.m.	\$86	Fundamentals, skill building, activities & small sided games
6-16	Half-Day Camp	9:00 a.m.-Noon	\$115	Individual skill development, core techniques & small sided games

*Registration for this camp is managed by Challenger Sports. Go to www.appletonparkandrec.org and select "Sports Camps" for details.

YOUTH GOLF CAMP *featuring S.N.A.G.* A Parent/Child Class



Join us for an exciting, engaging introduction to the great game of golf! Utilizing the innovative S.N.A.G. system (Starting New At Golf), this program will incorporate modified, age appropriate equipment, simplified rules and terminology, and games and activities that teach the basics of golf in a way that is fun, positive and rewarding. This intro to golf program features a parent/child format, limited class sizes, and qualified instructors who will spend time with each child helping to create a lasting enjoyment of this lifelong game! All golf equipment will be provided!

DATES: **Session 1:** June 16 – July 14 (4 Weeks) **Session 2:** July 28 – August 18 (4 Weeks)

Both sessions will feature identical beginner level formats and lesson plans, but will allow the flexibility for children who participated in Session 1 to continue their progression.

LOCATION: Reid Golf Course, 1100 E. Fremont Street

FEE: \$25/resident, \$50/non-resident

WHAT TO BRING: Athletic shoes, water bottle



AGES	DAY	DATES	TIME	LOCATION	CLASS #
4-5	Thursday	June 16-July 14*	5:00-6:00 p.m.	Reid G.C.	372534-11
5-6	Thursday	June 16-July 14*	6:00-7:00 p.m.	Reid G.C.	372534-12
7-8	Thursday	June 16-July 14*	7:00-8:00 p.m.	Reid G.C.	372534-13
4-5	Thursday	July 28-Aug 18	5:00-6:00 p.m.	Reid G.C.	372534-21
5-6	Thursday	July 28-Aug 18	6:00-7:00 p.m.	Reid G.C.	372534-22
7-8	Thursday	July 28-Aug 18	7:00-8:00 p.m.	Reid G.C.	372534-23

* There will be no classes on Thursday, July 7. **Registration is based on the age your child will be on the first day of camp.

JUNIOR GOLF LESSONS



This program is designed to help individuals ages 7-13 develop the skills needed to enjoy and succeed at golf. Participants will experience a well-rounded curriculum that will focus on the core areas of swing mechanics, short game, etiquette and strategy. Skills will be developed through engaging activities and games utilizing different areas of Reid Golf Course.

BEGINNER: this program is designed for participants with little or no golf experience. Basic swing mechanics, putting techniques, general terminology, and etiquette will be introduced.

INTERMEDIATE: this program is for participants who have already developed a basic golf skill set. Focus will be on improving accuracy, power, shot making, and strategy.

**A limited number of youth clubs are available upon request at no additional charge.*

DATES: June 14–August 2 (Tuesdays) **FEE:** \$65/resident and non-resident

AGES	SKILL LEVEL	DAY	TIME	LOCATION	CLASS #
7-10	Beginner	Tuesday	8:00-8:50 a.m.	Reid Golf Course	372535-07
11-13	Beginner	Tuesday	9:00-9:50 a.m.	Reid Golf Course	372535-08
7-10	Intermediate	Tuesday	10:00-10:50 a.m.	Reid Golf Course	372535-09
11-13	Intermediate	Tuesday	11:00-11:50 a.m.	Reid Golf Course	372535-10

* Registration is based on the child's age on the first day of lessons.

JUNIOR GOLF LEAGUE

Our Junior Golf League for ages 11-17 will give participants an opportunity to challenge themselves and develop their game in a friendly competitive format. Each week, golfers will play 9 holes with guidance from an experienced instructor. This league is designed for individuals with developed skill set and is **not intended for beginners**. Pre-registration IS REQUIRED. (*Season pass holders of Reid G.C. do not need to pay the daily green fee, but will need to pay the league registration fee.)

DATES: June 15 – August 3 (Wednesdays)

FEE: \$30 plus daily greens fee

INCLUDED: League registration includes a free Titleist microfiber towel.

AGES	SKILL LEVEL	DAY	TIME	LOCATION	CLASS #
11-13	Intermediate-Advanced	Wednesday	9:00 a.m. – 12:00 p.m.	Reid Golf Course	376511-01
14-17	Intermediate-Advanced	Wednesday	9:00 a.m. – 12:00 p.m.	Reid Golf Course	376511-02

* Registration is based on the age your child will be on the first day of the league.



LITTLE HITTERS TENNIS CAMPS

Children ages 4 through 7 are invited to join us for an exciting 4 week introduction to the great game of tennis! Our Little Hitters Camp utilizes the United States Tennis Association's "QuickStart" program to help kids learn and experience the game in a way that is both enjoyable and rewarding, with lighter racquets, larger low-bounce tennis balls, and smaller court dimensions. ALL EQUIPMENT IS PROVIDED, so come ready to have some fun!

DATES: **Session I:** June 13 - July 14 (4 weeks) – No class the week of July 4
Session II: July 18 - August 11 (4 weeks)
FEE: \$20/resident, \$45/non-resident **WHAT TO BRING:** Athletic shoes, water bottle

AGES	DAYS	TIME	LOCATION	SESSION I	SESSION II
4-5	Monday/Wednesday	9:00-9:30 a.m.	Erb Park	311617-E1	312617-E1
6-7	Monday/Wednesday	9:30-10:00 a.m.	Erb Park	311617-E2	312617-E2
4-5	Monday/Wednesday	10:00-10:30 a.m.	Erb Park	311617-E3	312617-E3
6-7	Monday/Wednesday	10:30-11:00 a.m.	Erb Park	311617-E4	312617-E4
4-5	Monday/Wednesday	11:00-11:30 a.m.	Erb Park	311617-E5	312617-E5
6-7	Monday/Wednesday	11:30 a.m.-12:00 p.m.	Erb Park	311617-E6	312617-E6



**Registration is based on the age your child will be on the first day of camp.*

AGES	DAYS	TIME	LOCATION	SESSION I	SESSION II
4-5	Tuesday/Thursday	12:30-1:00 p.m.	Pierce Park	311617-P1	312617-P1
6-7	Tuesday/Thursday	1:00-1:30 p.m.	Pierce Park	311617-P2	312617-P2
4-5	Tuesday/Thursday	1:30-2:00 p.m.	Pierce Park	311617-P3	312617-P3
6-7	Tuesday/Thursday	2:00-2:30 p.m.	Pierce Park	311617-P4	312617-P4
4-5	Tuesday/Thursday	2:30-3:00 p.m.	Pierce Park	311617-P5	312617-P5
6-7	Tuesday/Thursday	3:00-3:30 p.m.	Pierce Park	311617-P6	312617-P6

YOUTH TENNIS CAMPS



Children ages 8-14 of ALL ability levels are invited to join us for our 4 week Youth Tennis Camps and Friday Match Play! These camps will focus on making tennis an enjoyable and rewarding activity and emphasize recreational play. Beginners will learn the basic fundamentals and rules of the game, while intermediate students with a year or two of experience will further develop their ground strokes (forehand/backhand), volley, serve and consistency. Advanced students who have developed their game and shown an interest in competitive tennis will have an opportunity to challenge themselves with advanced technique and strategy. Two qualified instructors will work with the participants based on skill level.

DATES: **Session 1:** June 13–July 14 (4 weeks) – No class the week of July 4.
Session 2: July 18–August 11 (4 weeks) *Friday Match Play is optional...please see details below.*
FEE: \$25/resident, \$50/non-resident (per session)
WHAT TO BRING: Tennis racquet, athletic shoes, water bottle

LEVEL	AGES	DAYS	TIME	LOCATION	SESSION I	SESSION II
Beginner	8-10	Monday/Wednesday	9:00-9:50 a.m.	Pierce Park	312301-A1	312301-P1
Intermediate	8-10	Monday/Wednesday	10:00-10:50 a.m.	Pierce Park	312301-A2	312301-P2
Advanced	10-12	Monday/Wednesday	11:00-11:50 a.m.	Pierce Park	312301-A3	312301-P3
Beginner	11-14	Monday/Wednesday	1:00-1:50 p.m.	Pierce Park	312301-A4	312301-P4
Intermediate	11-14	Monday/Wednesday	2:00-2:50 p.m.	Pierce Park	312301-A5	312301-P5
Advanced	13-14	Monday/Wednesday	3:00-3:50 p.m.	Pierce Park	312301-A6	312301-P6

LEVEL	AGES	DAYS	TIME	LOCATION	SESSION I	SESSION II
Beginner	11-14	Tuesday/Thursday	9:00-9:50 a.m.	Erb Park	312301-E1	312301-S1
Intermediate	11-14	Tuesday/Thursday	10:00-10:50 a.m.	Erb Park	312301-E2	312301-S2
Advanced	13-14	Tuesday/Thursday	11:00-11:50 a.m.	Erb Park	312301-E3	312301-S3
Beginner	8-10	Tuesday/Thursday	1:00-1:50 p.m.	Erb Park	312301-E4	312301-S4
Intermediate	8-10	Tuesday/Thursday	2:00-2:50 p.m.	Erb Park	312301-E5	312301-S5
Advanced	10-12	Tuesday/Thursday	3:00-3:50 p.m.	Erb Park	312301-E6	312301-S6

**Registration is based on the age your child will be on the first day of camp.*

FRIDAY MATCH PLAY FOR YOUTH TENNIS!

All youth tennis camp participants are invited to attend Friday match play, where they will have an opportunity to play an actual match against other program participants of similar ability. Instructors will be on-site to help match participants with game play and scoring. There will be no makeup classes for youth tennis camps due to the availability of Friday match play.

DATES: Fridays, June 17 – August 12 **LOCATION:** Appleton North HS
TIMES: Beginners (ages 8-14) 9:00-9:50 a.m., Intermediate (ages 8-14) 10:00-10:50 a.m., Advanced (all ages) 11:00-11:50 a.m.

SPORTS EXPLORATION CAMPS: A Parent/Child Class

Our innovative, 4 week Sports Exploration Camp is a great way for pre-school aged children to experience a variety of new sports and activities in a format that is structured, engaging, and most of all...FUN! Children will have an opportunity to explore a new sport each week, learn some basic skills, and participate in fun games that will reinforce listening, teamwork, and the joy of being active! **This camp utilizes parent participation! One parent or older sibling (16 or older) will be expected to actively participate with each child enrolled.*

- DATES:** July 12–August 2 (Tuesdays)
FEE: \$15/resident, \$40/non-resident
WHAT TO BRING: Athletic shoes, water bottle



AGES	DAY	TIME	LOCATION	CLASS #
3	Tuesday	4:30-5:25 p.m.	Erb Park	311628-34
3-4	Tuesday	5:30-6:25 p.m.	Erb Park	311628-35
4-5	Tuesday	6:30-7:25 p.m.	Erb Park	311628-45

**Registration is based on the age your child will be on the first day of camp.*

PARKOUR

Discover your potential through the exploration and practice of Parkour. Known as the Art of Movement you will be able to run faster, jump farther and climb higher with this challenging, progressive discipline. This workshop will give you a look into the fastest growing free sport in the world!



- LOCATION:** Pierce Park Pavilion, 1035 W. Prospect Avenue (First class meet near stage by pavilion)
FEE: \$20/resident, \$45/non-resident *No class Friday, July 1

CLASS	AGES	DAY	DATES	TIME	CLASS #
Parkour	8 years old & older	Tuesday	May 3- May 31	4:30-5:30 p.m.	216416-51
Parkour	8-10 years old	Friday	June 10- July 15*	9:45-10:45 a.m.	316416-61
Parkour	11 years old & older	Friday	June 10- July 15*	11:00 a.m.-12:00 p.m.	316416-62
Parkour	8-10 years old	Friday	July 22-August 19	9:45-10:45 a.m.	316416-71
Parkour	11 years old & older	Friday	July 22-August 19	11:00 a.m.-12:00 p.m.	316416-81
Parkour	8 years old & older	Tuesday	September 13-October 11	4:30-5:30 p.m.	416416-91

BASIC ARCHERY INSTRUCTION



Join our National Archery in the Schools Program certified instructors to learn all about the popular sport of archery! Students will learn about archery safety, determine a student’s “dominant eye”, make a “string bow” to help with proper technique, and will learn about the 11 steps to archery success. All equipment and materials will be provided; please do not bring personal equipment. Parents are encouraged to register and attend as well! Class size is limited to 18 participants.

- FEE:** \$20/resident, \$45/non-resident



AGES	DAYS	DATES	TIME	LOCATION	CLASS #
9-15	Monday & Tuesday	June 27 & 28	5:00-6:30 p.m.	Scheig Center, 1313 E. Witzke Boulevard (Former Gardens Building)	313509-M1

YOUTH SPORTS LEAGUE INFORMATION

ABOUT OUR YOUTH SPORTS LEAGUES: Appleton Parks and Recreation is committed to providing a high quality youth sports experience for our participants, parents, coaches, and spectators. All of our youth sports leagues are driven by the same core philosophy, to introduce and develop the skills needed for lifelong enjoyment of sports in a setting that is inclusive, engaging, and centered on FUN and sportsmanship. Each participant in our summer and fall sports leagues will receive a team t-shirt, and will practice once per week (in addition to scheduled league games). Visit www.appletonparkandrec.org for more details about each league, or email aprdsports@appleton.org.

3 SIMPLE WAYS TO REGISTER

1. **Online** at www.appletonparkandrec.org
2. **By Mail** to Appleton Parks and Recreation, P.O. Box 1976, Appleton, WI 54912-1976
3. **Drop-Off** at the First Floor Customer Service Center, City Hall, 100 N. Appleton Street

League registration forms are available at various Appleton locations including City Hall, Appleton Public Library, City swimming pools, the City Center Plaza Studios, or may be printed from our website.



VOLUNTEER COACHES: Our sports programs rely on great volunteer coaches, and coaching is a rewarding way to positively impact the lives of our young athletes. We provide comprehensive training and lesson materials which enable all of our volunteers to be successful, so if you have the skill and confidence to lead and encourage kids, then you already have what it takes to be a great coach! **Indicate your interest in coaching under the “Coach Sign Up” section during registration.**

***We perform criminal background investigations on all of our volunteer coaches. All coaches will attend a department-sponsored coach’s meeting and training, where league rosters, rules and lesson materials are provided.**

SPORT	AGES	DAY/DATES	TIME	LOCATION	FEE RESIDENT/ NON-RESIDENT	EARLY BIRD DEADLINE/ FINAL DEADLINE*
Youth Baseball, Softball & T-Ball (Boys & Girls)	Grades 4K-6 (current) (Must be 5 by 9/1/16)	June 13 to August 3 (no games week of 7/4) T-Ball – Mon OR Tues Boys 1 st -4 th grd. – Mon Girls 1 st -4 th grd. – Tues Boys 5 th /6 th grd. – Wed Girls 5 th /6 th grd. – Wed	4:45-9:00 p.m. (Game start times may vary)	Appleton Memorial Park	\$25/\$50 Early Bird \$35/\$60 after April 13	April 13, 2016 April 27, 2016*
Coed Youth Kickball	Entering Grades 3-6	Tuesdays, July 19 to August 23	6:00-8:00 p.m. (Game start times will vary)	Appleton Memorial Park	\$20/\$45 Early Bird \$30/\$55 after June 2	June 7, 2016 June 21, 2016*
Youth Soccer (Boys & Girls)	Boys entering grades K-6 Girls entering grades K-8	Saturdays, September 10 to October 15	8:30 a.m.-2:30 p.m. (Game start times will vary)	Scheels USA Youth Sports Complex	\$25/\$50 Early Bird \$35/\$60 after July 8	July 13, 2016 July 27, 2016*
Coed Flag Football	Entering Grades 1-8	Tuesdays, September 13 to October 18	5:15-8:15 p.m. (Game start times will vary)	Appleton Memorial Park	\$20/\$45 Early Bird \$30/\$55 after July 21	July 21, 2016 August 4, 2016*
Youth Basketball (Boys & Girls)	Grades K-6	Saturdays, January 7 to February 25, 2017	8:30 a.m.-2:00 p.m. (Game start times will vary)	Einstein and Madison Middle School	\$25/\$50 Early Bird \$35/\$60 after November 3	Nov. 2, 2016 Nov. 16, 2016*

***Registrations received prior to the Early Bird registration deadline receive a \$10 discount off our standard fee!
One discount per registration received.**

ADULT TENNIS LEAGUES

Enjoy friendly competition and an opportunity to socialize with other tennis enthusiasts in our adult tennis leagues! Participants will play one match per week, and a minimum of 7 matches. Both singles and doubles formats are available. All participants must be at least 18 years old and have exhausted their high school eligibility, per WIAA guidelines. "Novice" level is designed for players who play recreationally and are relatively new to the sport of tennis. "Advanced" level is for more experienced players who desire a higher level of competition. Awards are given to 1st place winners in each league at the conclusion of the season.

LOCATIONS: Pierce Park or Erb Park

DATES: June 7 – August 4 (8 weeks) No matches the week of July 4.

FEE: **Singles**--\$15/resident, \$50/non-resident

Doubles--\$20/team plus additional \$35 each non-resident player

LEAGUE	DAY	TIME	COURT	CLASS #
Men's Novice	Tuesday*	5:30-7:00 p.m.	Erb Park	TENTUEMN
Men's Advanced	Wednesday*	5:30-7:00 p.m.	Pierce Park	TENWEDMM
Women's Novice	Thursday*	5:30-7:00 p.m.	Pierce Park	TENTURWM
Women's Advanced	Tuesday*	5:30-7:00 p.m.	Pierce Park	TENTUEWN
Mixed Doubles	Wednesday*	5:30-7:00 p.m.	Erb Park	TENWEDMX



*Must follow the match schedule for the day, time & location **League Entry Deadline: Wednesday, May 18!

ADULT TENNIS LESSONS

Whether you're brand new to the sport, or looking to improve and develop your game, we have an adult lesson program to suit your interests! Choose from three skill levels, and your choice of one night per week, or two nights per week! Beginner participants will be introduced to the fundamental skills needed to play and enjoy the game. Intermediate participants should have one year of lessons and will work on the development of their ground strokes, volleys, serves and game play. Advanced participants should have two or more years of lessons and will focus on fine-tuning their technique and strategy.

LOCATION: (NEW LOCATION) Appleton North High School tennis courts, 5000 N. Ballard Road, Appleton

DATES: June 14–August 11 (8 weeks) No class week of July 4.

FEE: Tuesdays **ONLY**, Thursdays **ONLY**: \$15/resident, \$50/non-resident
OR Tuesdays **AND** Thursdays: \$30/resident, \$65/non-resident

LEVEL	DAYS	TIME	LOCATION	CLASS #
Beginner	Tuesdays ONLY	5:30-6:20 p.m.	Appleton North HS	314702-A1
Beginner	Thursday ONLY	5:30-6:20 p.m.	Appleton North HS	314702-A2
Beginner	Tuesdays & Thursdays	5:30-6:20 p.m.	Appleton North HS	314702-A3
Intermediate	Tuesdays ONLY	6:20-7:10 p.m.	Appleton North HS	314702-B1
Intermediate	Thursday ONLY	6:20-7:10 p.m.	Appleton North HS	314702-B2
Intermediate	Tuesdays & Thursdays	6:20-7:10 p.m.	Appleton North HS	314702-B3
Advanced	Tuesdays ONLY	7:10-8:00 p.m.	Appleton North HS	314702-C1
Advanced	Thursday ONLY	7:10-8:00 p.m.	Appleton North HS	314702-C2
Advanced	Tuesdays & Thursdays	7:10-8:00 p.m.	Appleton North HS	314702-C3

ADULT 7 ON 7 FLAG FOOTBALL - 7 WEEKS

Join Appleton Parks and Recreation on Wednesday evenings at Appleton Memorial Park for some Adult Flag Football!!! Team registration forms can be found online at our website www.appletonparkandrec.org or at the 1st Floor City Hall Customer Service Center, 100 N. Appleton Street. Returning team registration is due Tuesday, August 9. New teams can register at anytime, but will not be placed in a division until after the returning team deadline. Registration for new teams will be accepted until Tuesday, August 16 at 4:00 p.m. League play begins September 7. Please contact the Recreation Programmer at 920-832-3926 with questions.

AGES	DAY/DATES	TIMES	LOCATION	FEE	DEADLINE
18 and Over	Wednesdays, Sept. 7 - Oct. 5 Single Elimination tourney begins Oct. 12	6:00, 7:00, 8:00 or 9:00 p.m.	AMP - Softball Diamonds	\$250	Returning Teams–Aug. 9 New Teams–Aug. 16



FUNDAMENTALS OF PHOTOGRAPHY

When many of us take photographs, we simply point our cameras and click without being aware of what we're doing and seeing. With Fundamentals of Photography, you'll learn everything you need to know about the art and craft of great photography straight from a professional photographer with more than 30 years of experience. You will discuss key terms, buttons and settings on your camera, and what to use in different situations, as well as learn about depth of field when shooting, how to download, edit, and store your images. Get ready for hands on interactive photography in our beautiful gardens area at the Scheig Center in Appleton Memorial Park.

INSTRUCTORS: Debbie Daanen & Ashley Schmit

AGES	DAY	DATES	TIME	LOCATION	FEE	CLASS #
16 & Up	Tuesdays	May 17-June 7	6:00-7:00 p.m.	Scheig Center	\$20	214714-T1

FALL ADULT DANCE CLASSES



Try something new this fall! These classes are designed to provide participants an opportunity to strengthen their current skills and/or learn a new genre of dance.

SESSIONS (ADULT): September 21 – December 14 (No class Nov. 23); 12 weeks
LOCATION: City Center Plaza, 2nd floor, Studio 1 & 2
FEE: Senior (62+): \$60/resident, \$85/non-resident
 Adult: \$90/resident, \$125/non-resident



SAVINGS!! Sign-up for both fall & winter/spring sessions and SAVE!

Fall Session: September 21 – December 14 (No class Nov. 23); 12 weeks
 Winter/Spring Session: January 4 – March 22; 12 weeks

REGISTER FOR BOTH 12-week sessions: Adult \$140/resident, \$175/non-resident, Senior (62+): \$100/resident, \$125/non-resident

CLASS	LEVEL	AGES	DAYS	TIME	LOCATION	FALL CLASS#	SPRING CLASS #
Belly Dance	Beginner/Intermediate	19+	Wednesday	7:10-7:50 p.m.	Studio 2	414108-W1	114108-W1
Belly Dance	Advanced	19+	Wednesday	7:55-8:35 p.m.	Studio 2	414108-W2	114108-W2
Tap	Advanced	19+	Wednesday	6:15-6:55 p.m.	Studio 1	414104-W1	114104-W1
Tap	Beginner/Intermediate	19+	Wednesday	5:30-6:10 p.m.	Studio 1	414104-W2	114104-W2

HEALTH & WELLNESS

We offer a variety of fitness classes including Yoga, Zumba®, and Boot Camp. Classes held indoors are held at our Studios located in City Centre Plaza or the Scheig Center. For a complete listing of classes, visit our website www.appletonparkandrec.org.

OUTDOOR FITNESS CLASSES - BOOT CAMP, YOGA AND ZUMBA

SESSION DATES:

Spring 2: Week of April 18–Week of May 30 (No class May 30) – 1x/week – 7 classes, 2x/week – 14 classes

Summer: Week of June 13–Week of August 22 (No classes July 4-July 8) – 1x/week – 10 classes, 2x/week – 20 classes

LOCATIONS: Telulah Park at 1300 E. Newberry St., Pierce Park at 1035 W. Prospect Ave. or Scheig Center at 1313 E. Witzke Blvd.

CLASS	AGES	DAY(S)	TIME	LOCATION	RES/NON-RES	SPRING CLASS #
Yoga	14+	M	9:00-10:00 a.m.	Scheig Center	\$15.00/\$50.00	216403-M1
Boot Camp	14+	M, W	4:45-5:45 p.m.	Telulah Park	\$32.50/\$67.50	216415-M1
Zumba®	14+	M	5:30-6:30 p.m.	Pierce Park	\$15.00/\$50.00	214410-M2
Strength	14+	M	6:35-7:20 p.m.	Pierce Park	\$13.50/\$48.50	214414-M2
Yoga	14+	W	5:30-6:30 p.m.	Scheig Center	\$17.50/\$52.50	216403-W4
CLASS	AGES	DAY(S)	TIME	LOCATION	RES/NON-RES	SUMMER CLASS #
Yoga	14+	M	9:00-10:00 a.m.	Scheig Center	\$25.00/\$60.00	316403-M1
Boot Camp	14+	M, W	4:45-5:45 p.m.	Telulah Park	\$50.00/\$85.00	316415-M1
Zumba®	14+	M	5:30-6:30 p.m.	Pierce Park	\$25.00/\$60.00	314410-M2
Strength	14+	M	6:35-7:20 p.m.	Pierce Park	\$19.00/\$54.00	314414-M2
Yoga	14+	W	5:30-6:30 p.m.	Scheig Center	\$25.00/\$60.00	316403-W4

Appleton Parks and Recreation and Empower Yoga are again partnered this summer to offer free yoga in the park! Join us for free outdoor Yoga classes at City Park. Yoga practice reduces your stress and tension and improves your balance, flexibility and core strength. Beginners to more experienced yogis are welcome to join in on this weekly wellness event in the park. Contact suzy@empowerappleton.com or heidi.ericson@appleton.org with questions. **DROP IN for class any Wednesday at City Park from May 25 through August 31 and join in the fun for FREE.** This 60-minute class begins at 6:00 p.m. and is led by Suzy Weyenberg. Please bring your own yoga mat or beach towel and water.

***Please note, July 27 class will be held at Erb Park due to Children's Parade events scheduled at the City Park.**

empower yoga ॐ



SUP (Stand-Up Paddleboard) Yoga with Pedretti Power Yoga



Allie Pedretti-Beining, owner of Pedretti Power Yoga, will take you on a SUP Yoga journey. The class will combine traditional yoga postures with the added bonus of floating on a SUP. Class begins with a paddle lesson for those new to the board, a warm-up paddle followed by an amazing yoga experience on water. Every yoga class will bring forth a unique experience as the dynamics of the ever-changing environment bring new challenges and enlightments to us.



Why SUP Yoga? Yoga poses on an unstable surface are not only more challenging, it will refine your technique. It is more calming, helps you focus on your breath, and is empowering. It teaches you to get back up and try again. It's beautiful and fun!

What to wear: we recommend you wear comfortable yoga attire (preferably non cotton clothing) or swimsuits. Wearing non-stretch or heavy cotton clothing will limit your ability to move comfortably. A bikini/bathing suit and board shorts may be preferred attire. There's always a chance you could get wet so come prepared - bring a change of clothes and a towel!

Maximum enrollment is 8, minimum enrollment is 4. Registration fee includes SUP rental. There are facilities at Mead Pool for changing, showering and getting ready for work.

SESSION DATES:

Summer: June 16–August 18 (No classes July 7)–1x/week 9 classes

LOCATION:

Mead Pool, 1430 E. John Street

CLASS	AGES	DAY	TIME	FEE	CLASS #
SUP Yoga	19+	TH	5:30-6:30 a.m.	\$180/session*	314422-A1

*One class registration fee options available on website only, www.appletonparkandrec.org.

PROGRAMS PARTNERED WITH FLEET FEET SPORTS FOX VALLEY

Famous for their world class marathon/half marathon training programs, Fleet Feet Sports also train beginners. To register for programs partnered with Fleet Feet Sports Fox Valley, visit our website, www.appletonparkandrec.org, visit Fleet Feet's website at www.fleetfeetfoxvalley.com/training, or call 920-830-7867.



WALK FIT

A coach led, 6-week walking program that meets participants at their current fitness level and helps them progress safely to meet their walking goals. This fun, encouraging, and supportive program is made for you!

MAKE IT A MILE

Jumpstart your health with our safe, fun, coach-led 4-week walking/running program. The program includes a safe, guided training plan designed to allow you to work at your own pace in a non-threatening, non-judgmental environment.

NO BOUNDARIES

No Boundaries is a 10-week training program guiding participants to run or walk their first 5K race. The purpose of the program is to introduce participants to the lifetime fitness activities of running and walking and to encourage them to live healthier lifestyles.

LOCATION:

All classes meet at Appleton Family Ice Center Parking Lot, located at 1717 E. Witzke Boulevard within Appleton Memorial Park

CLASS	AGES	DAYS	DATES	TIME	FEE	CLASS #
Make It A Mile-Spring	14+	TU, TH	April 26-May 19	6:00 p.m.	\$40	214420-12
Make It A Mile-Summer	14+	TU, TH	June 14-July 7	6:00 p.m.	\$40	314420-13
Make It A Mile-Fall	14+	TU, TH	August 23-September 15	6:00 p.m.	\$40	314420-14
No Boundaries-Spring	14+	TU, TH	March 15-May 21	6:00 p.m.	\$100	114421-21
No Boundaries II-Firecracker 5K	14+	TU, TH	May 24-July 4	6:00 p.m.	\$60	214421-22
No Boundaries	14+	TU, TH	July 12-September 17	6:00 p.m.	\$100	314421-22
No Boundaries II-Turkey Trot	14+	TU, TH	September 20-November 24	6:00 p.m.	\$100	414421-23
WalkFit-Spring (2-mile)	14+	TU, TH	April 5-May 12	6:00 p.m.	\$60	214423-12
WalkFit-Summer (2-mile)	14+	TU, TH	May 16-June 30	6:00 p.m.	\$60	214423-13
WalkFit-Turkey Trot (2-mile)	14+	TU, TH	October 4-October 13	6:00 p.m.	\$60	414423-14

PROGRAMS PARTNERED WITH KARATE AMERICA

For all programs partnered with Karate America – East or Karate America Northland, register through Appleton Parks and Recreation.



SESSION DATES FOR ALL CLASSES LISTED BELOW (UNLESS OTHERWISE NOTED)

Spring 2: Week of April 18 – Week of May 30 (No classes May 30)
 2x/week-14 classes, 3x/week-21 classes
 Summer: Week of June 13 – Week of August 22 (No class July 4-9)
 2x/week-20 classes, 3x/week-30 classes



CLASSES HELD AT KARATE AMERICA-EAST – W3173 SPRINGFIELD DRIVE DDP YOGA

DDP Yoga is a hybrid workout that incorporates traditional yoga movements and adds dynamic resistance, active breathing techniques and power movements to make for a more challenging and results-oriented workout. DDP YOGA is currently used by professional football players, over 40 professional wrestlers, MMA fighters, and regular, everyday people who want to perform at optimum levels and want to place themselves in the best position to see career and life changing results and improve their quality of life. At the same time, morbidly obese individuals have inspired us with their own DDP YOGA success stories! The main benefits are body fat loss, lean muscle growth, and improved cardio levels all without placing undue stress on the joints!

CLASS	AGES	DAY(S)	TIME	FEE	SPRING 2 CLASS #	SUMMER CLASS #
DDP Yoga	14+	M	6:00-7:00 a.m.	\$35	216406-12	316406-22
DDP Yoga	14+	TU	7:30-8:30 p.m.	\$35	216406-13	316406-23
DDP Yoga	14+	F	6:00-7:00 a.m.	\$35	216406-14	316406-24
DDP Yoga Combo	14+	M, TU	6:00-7:00 a.m., 7:30-8:30 p.m.	\$70	216406-15	316406-25
DDP Yoga Combo	14+	M, F	6:00-7:00 a.m., 6:00-7:00 a.m.	\$70	216406-16	316406-26
DDP Yoga Combo	14+	TU, F	7:30-8:30 p.m., 6:00-7:00 a.m.	\$70	216406-17	316406-27
DDP Yoga Super Combo	14+	M, TU, F	6:00-7:00 a.m., 7:30-8:30 p.m., 6:00-7:00 a.m.	\$100	216406-18	316406-28

FITNESS KICKBOXING

For fun, fitness, and self-defense try the “Ultimate Fat Burning Workout”! This is a high energy, exciting, and explosive fitness and conditioning workout which combine the kicks of karate with the punches of boxing. This specially designed class is taught by a Nationally Certified instructor who holds a Black Belt. This class will get you in the shape you have always wanted while teaching you valuable self-defense skills.

CLASS	AGES	DAY(S)	TIME	FEE	SPRING 2 CLASS #	SUMMER CLASS #
Kickboxing	14+	M	7:45-8:45 p.m.	\$35	214417-A1	314417-A1
Kickboxing	14+	W	7:00-8:00 p.m.	\$35	214417-A2	314417-A2
Kickboxing	14+	SA	7:45-8:45 a.m.	\$35	214417-A3	314417-A3
Kickboxing Combo	14+	M, W	7:45-8:45 p.m., 7:00-8:00 p.m.	\$70	214417-A4	314417-A4
Kickboxing Combo	14+	M, SA	7:45-8:45 p.m., 7:45-8:45 a.m.	\$70	214417-A5	314417-A5
Kickboxing Combo	14+	W, SA	7:00-8:00 p.m., 7:45-8:45 a.m.	\$70	214417-A6	314417-A6
Kickboxing Super Combo	14+	M, W, SA	7:45-8:45 p.m., 7:00-8:00 p.m., 7:45-8:45 a.m.	\$100	214417-A7	314417-A7

CLASSES HELD AT KARATE AMERICA-NORTHLAND LOCATION-220 W. NORTHLAND AVENUE

FITNESS KICKBOXING

Challenge yourself and change your body with this fun, effective “Ultimate Fat Burning Workout”. This high intensity interval training will include boxing/kickboxing, core resistance, cardio, toning, and stress relief. Great instructors with certified Black Belt/martial arts experience, positive music choices and an excellent way to reach YOUR personal goals.

CLASS	AGES	DAY(S)	TIME	FEE	SPRING 2 CLASS #	SUMMER CLASS #
Kickboxing Combo	14+	TU, TH	5:30-6:30 a.m., 5:30-6:30 a.m.	\$70	214417-12	-----
Kickboxing Super Combo	14+	TU, TH, SA	5:30-6:30 a.m., 5:30-6:30 a.m., 8:00-9:00 a.m.	\$100	214417-13	-----
Kickboxing Combo	14+	M, W	6:00-7:00 a.m., 6:00-7:00 a.m.	\$70	-----	314417-12
Kickboxing Super Combo	14+	M, W, SA	6:00-7:00 a.m., 6:00-7:00 a.m., 8:00-9:00 a.m.	\$100	-----	314417-13

WOMEN'S SELF DEFENSE CLASS

This class will provide you with some great practical safety advice and basic self-defense tips and tools to keep you safe at all times. This is a great opportunity for mothers/daughters to take this class together. Six classes/session

SESSION DATES: Spring 2: Week of April 18 – Week of May 23 Summer: Week of June 13 – Week of July 25 (No class July 4, 5)

CLASS	AGES	DAY	TIME	LOCATION	FEE	SPRING 2 CLASS #	SUMMER CLASS #
Women's Self Defense	14+	M	7:00-8:00 p.m.	Northland Ave.	\$30	214418-T2	314418-T2
Women's Self Defense	14+	TU	6:30-7:15 p.m.	Springfield Dr.	\$30	214418-T1	314418-T1

ACTIVE ADULT FITNESS

Forever Fit – Workout with Angie and enjoy great music in a positive, encouraging atmosphere. A 90 minute (*stay for 60 or 90 minutes) total body workout which will have fun cardio moves, weight training and core exercises. Men and woman of all fitness levels are welcome, equipment is provided.

Slow Stretch – Enjoy the benefits of chair exercise as taught by Roxann at Oneida Heights or Brittany at Eagle Flats in a comfortable setting designed for those who choose to exercise in a seated position. Those with recent physical challenges (stroke recovery, hip and knee replacement, sight and balance) are welcome!

Stretch & Strength – Building strong bones is facilitated through building strong muscles. Angie will teach proper weight training and stretching. Men and woman of all fitness levels are welcome, equipment is provided.

DATES: Spring Classes March 7 - May 27
Summer Classes May 31 - August 26

* **Forever Fit classes are held in Studio 1, City Center Plaza during the summer (June 1-August 26).**



CLASS	DAY(S)	TIME	LOCATION	FEE PER CLASS
Slow Stretch	M	9:30-10:30 a.m.	Eagle Flats, 431 E. Eagle Flats Parkway	\$1
Stretch & Strength	TU, TH	9:00-10:00 a.m.	Appleton Public Library-Lower Level	\$2
Slow Stretch	W	9:30-10:30 a.m.	Oneida Heights-525 N. Oneida Street	\$1
Forever Fit	W, F	9:00-10:00 a.m.	Appleton Public Library-Lower Level*	\$2 - 60 min., \$3 - 90 min.

ACTIVE ADULT EDUCATION

WEEKLY WALKS

Walk and learn in this walking group. Meet us at City Park and we will set off on our journey. We include stretching before and after our walk. You will learn some interesting tidbits about our community! If you are looking for that accountability to stick to a walking plan, then this is the group for you.



LOCATION: City Park (Meet at the pavilion)

DATES: Mondays, April 18 – August 29

TIME: 9:00 – 10:30 a.m.

FEE: FREE

SPANISH I, II, III

Instruction in conversation, vocabulary, verb tenses, audio/visual listening comprehension and written exercises. Spanish I, II & III include expanded vocabulary and reading selections. Classes are designed for participants age 45+.

LOCATION: Appleton Public Library,
225 N. Oneida Street

FEE: \$25, additional fee for book.



LEVEL	TUESDAYS	TIME	CLASS #
Spanish I	Apr. 12-May 17	3:00-4:00 p.m.	215704-T1
Spanish II	Apr. 12-May 17	1:00-2:00 p.m.	215704-T2
Spanish III	Apr. 12-May 17	2:00-3:00 p.m.	215704-T3
Spanish I	Sept. 13-Oct. 18	3:00-4:00 p.m.	415704-T1
Spanish II	Sept. 13-Oct. 18	1:00-2:00 p.m.	415704-T2
Spanish III	Sept. 13-Oct. 18	2:00-3:00 p.m.	415704-T3

ACTIVE ADULT SPECIAL EVENTS

FOX CITIES SENIOR GAMES

Join in the fun and play friendly picnic games along with other Fox Valley seniors (age 50+). A delicious lunch will be served along with games, demonstrations, giveaways and a variety of exhibitors.

This is a registered event! Registration forms are available at City Hall Customer Service or go to www.appletonparkandrec.org, search "Senior Games."

LOCATION: Jefferson Park - Menasha
1035 W. Prospect Avenue

DATE: Tuesday, August 9

TIME: 9:00 a.m. – 1:00 p.m.



Nature Series at the Scheig

Join Rob Zimmer, nature and garden writer, for monthly presentations that may include walking around the gardens, a slide show, or hands-on experiences. These monthly programs are free and open to all ages! Both are held at the Scheig Center in Appleton Memorial Park with two opportunities to participate each month, the 2nd Tuesday from 6:00-7:00 p.m. for the 2nd Wednesday from 10:00-11:00 a.m.

OUTDOOR WATER RECREATION

Recreational Rowing

This class is aimed at introducing you to the basics of rowing. Whether you are looking to get fit, have fun or enjoy the beautiful Fox River, this is exactly the class that you're looking for. Classes meet at the Telulah Park river access. The Fox Valley Rowing Club provides instruction and equipment. After the conclusion of the class, participants are encouraged to join the club.

FEE: \$75 for the Monday and Wednesday class *No class on May 30.

DAYS	AGES	DATES	TIME	LOCATION	CLASS #
Monday & Wednesday	15 to Adult	May 2-June 6*	5:30-7:30 p.m.	Telulah Park River Access	214701-MW



Kayak Skills Class

This is the class you have been waiting for! The Kayak Skills class emphasizes safety, enjoyment, and skill acquisition for all entry level participants. Learn about basic kayak maneuvers, outfitting your boat to fit your needs, and basic safety principals. Upon completion of this class, there will be an optional outing on the Fox River so you can put your skills to use immediately. Instruction is taught by members from the North East Wisconsin Paddlers. Kayaks will be provided but participants are encouraged to bring their own to class.

FEE: \$70/resident. \$105/non-resident

DAYS	AGES	DATES	TIME	LOCATION	CLASS #
Monday & Wednesday	16 and over, Ages 10-15 MUST register with a parent	June 6, 8, 13 & 15	6:30-9:30 p.m.	Erb Pool, 1800 N. Morrison St. <i>Class room portion of the class will meet at 1819 Witzke Blvd.</i>	314706-S1

SNORKELING CLASS

This snorkeling class will introduce the participant to different types of snorkeling gear, snorkeling techniques and learning about how to snorkel safely. Instruction and equipment are furnished by Mountain Bay Scuba.



DISCOVER SCUBA

Get a chance to discover the excitement of scuba diving in this introductory class! Learn about your scuba equipment, breathing techniques, and underwater exploration. Instruction and equipment are furnished by Mountain Bay Scuba.

FEE: \$15/resident, \$20/non-resident **LOCATION:** Erb Pool, 1800 N. Morrison Street, Appleton

CLASS	AGES	DAY	DATE	TIME	CLASS #
Snorkel Class	8 & over	Tuesday	June 7	10:00 a.m.-12:00 p.m.	316501-T1
Snorkel Class	8 & over	Saturday	July 16	10:00 a.m.-12:00 p.m.	316501-S1
Discover Scuba	10 & over	Thursday	June 9	10:00 a.m.-12:00 p.m.	316501-H1
Discover Scuba	10 & over	Sunday	July 17	10:00 a.m.-12:00 p.m.	316501-S2

Boat Launch Fees

Boat launches are available at several areas along the Fox River. Appleton residents may enjoy the Menasha launch at the resident fee, due to the Appleton/Menasha/Neenah Reciprocal Agreement for parks and recreation services. Annual stickers must be purchased at the Parks and Recreation Department in the community where you wish to launch. Proof of residency and a copy of your boat registration are required.

CITY	DAILY FEE	ANNUAL RESIDENT FEE	NON-RESIDENT FEE	LAUNCH LOCATION
APPLETON	\$4	\$12	\$30	Lutz Park, 1320 S. Lutz Drive
MENASHA	\$5	\$20 \$15 Senior (55+)	\$40 \$30 Senior (55+)	Jefferson Park, Smith Park (Park St.), Barlow/Lock St., Ninth St. & Manitowoc St.
NEENAH	\$7	\$18 \$13 Senior (55+)	-----	Doty Park and Recreation Park

WELCOME TO OUR POOLS!



We invite you to enjoy one of our aquatic facilities for open or lap swim, water play, or just a place to relax, it's up to you! All open swim times are supervised by a pool manager and lifeguards. Staff is certified in Red Cross Lifeguard Training, CPR for the Professional Rescuer, AED, and First Aid.

Please keep in mind some of these basic safety & facility rules before planning your day:

- Children ages 7 and under are not allowed at the pools unless supervised by parent, guardian, babysitter or sibling at least 16 years of age or older. **NO EXCEPTIONS!**
- Children ages 4 and under and all non-swimmers must be accompanied (within arms-reach) by a parent, guardian, babysitter, or sibling at least 16 years of age or older at all times while in the water. **Parents and children ages 4 and under will be asked to wear a wristband upon entry to the facility.**
- Non-swimming parents or guardians may enter the facility for a fee of \$1.00. If non-swimming parents or guardians are supervising a child ages 4 years and under, they are **REQUIRED** to purchase the regular price admission and be within arms-reach of supervised child at all times, including in the water.
- U.S. Coast Guard approved life jackets may be worn at the pools and are available upon request. All non-swimmers are **STRONGLY** encouraged to wear life jackets. Life jackets are available upon request. Sorry, no life jackets off of the high dives or down water slides.
- Children who are not toilet trained must wear a swim diaper (available for \$2 at the front desk).
- Cash refunds are not given due to low attendance or inclement weather.
- Lockers are available at Erb and Mead Pools. **Bring your own lock or you may rent one from the front desk for \$.50.**
- Erb Wading Pool will not be lifeguarded. **Adult supervision is required for children ages 7 and under.**
- Children 5 and over must use the same sex locker rooms. Unfortunately, our aquatic facilities do not offer family changing areas. Please plan accordingly.
- No carry-ins allowed including food, beverages, lawn chairs, coolers, or glass containers.
- Water wings or "arm floaties" are not allowed at any pool.
- Personal water toys are allowed at Erb and West Pools during open swim when children are accompanied by a parent.
- Patrons leaving the facility who wish to return must get a stamp from the front desk in order to gain admittance upon return OR be a season pass holder.
- Patrons must be 44" tall to use the water slide and 54" tall for the 3-meter board or pass a swim test administered by the pool manager.

2016 Swim Coupons

AGES	COST
4-17	\$20
18-61	\$30
62+	\$20

Each coupon provides you with 12 swim admissions good for Erb, Mead or West Pools!



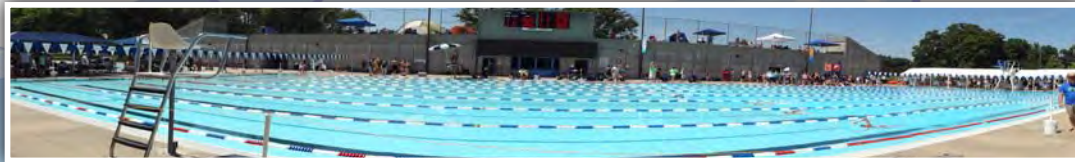
All City of Appleton pools are proudly operated by certified Aquatic Facility Operators through the National Recreation and Parks Association. Enjoy your swim!

ERB POOL

Heated Outdoor Pools - Open Friday, June 3 to Sunday, August 14
1800 N. Morrison Street • 920-832-5917

Erb Pool has been an Appleton favorite for over 30 years! At Erb Pool, you get 3 pools for the price of one. The 50-meter pool is an excellent venue for lap swimming which also includes 2 diving boards and a drop slide. A concession stand is also available for our patrons in the lobby area. One lap lane (25 yds.) is always available for use during open swim. The instructional and wading pools provide an excellent environment for toddlers and young children. Erb Pool is ADA Compliant for people of all abilities.

Admission Prices: Ages 3 and Under – FREE, Ages 4-17 – \$2, Ages 18-62 – \$3, Ages 62+ – \$2



ACTIVITY	DAYS	TIME
Adult Lap Swim Ages 14+	Daily	12:00–1:00 p.m.
Lap Swim-Any Age	Daily Monday & Wednesday	4:30–6:00 p.m. 6:00–8:00 a.m.
Open Swim	Daily Monday thru Friday, Sunday	1:00–4:30 p.m. 6:00–8:00 p.m.
Free Wading Pool (During Morning Swim Lessons Only) <i>Adults with children only</i>	Monday–Friday (closed July 4-8 until 1 p.m.)	9:45 a.m.–12:00 p.m.

- ▶ **Erb Pool will be closed SATURDAY evenings at 6:00 p.m. throughout the entire summer.**
- ▶ **Erb Pool will close at 6:00 p.m. on Sunday, July 3 and will be open from 12-1 p.m. for lap swim and 1-4:30 p.m. for open swim on Monday, July 4.**
- ▶ **Erb Pool will be closed June 18-19 and July 8-10 for two YMCA swim meets. Any Fox Valley YMCA will honor pool passes at their facility during both swim meets.**

Water Aerobics - Aqua Fusion

Stop by Erb Pool this summer to try out our water aerobics class – Aqua Fusion! Our certified, enthusiastic instructors will make sure you get the most out of each and every class. Give it a try, you'll LOVE it!

DATES: June 7 – August 11 (No classes July 4-8)
DAYS: Tuesday & Thursday
TIME: 8:00-9:00 p.m.
LOCATION: Erb Pool, 1800 N. Morrison Street
FEE: \$5 drop in fee, \$40 punch card – 8 classes
 1st class is always free after purchase of a punch card.

Erb Pool Dive-In Movie

Kick off the beginning of Children's Week 2016 with this FREE event! Just bring your suit and enjoy the show! Concessions will be available as well as out of water seating.

Date: Sunday, July 24
Time: Movie will begin around dusk
Movie: The Goonies



Wacky Wednesdays

The creative juices will be flowing at Erb Pool throughout the summer as we bring you "Wacky Wednesdays"! A variety of games, admission discounts, and "Wacky" events are sure to keep you coming back for more! Check the Erb Pool calendars for specific event details.

Erb Pool Rental

FEES: \$80/hour (50-meter pool including lifeguards). For groups over 136 people or multiple pool rentals, additional fees may apply.
TIMES: Monday, Wednesday, Friday and Sunday evenings from 8:15–10:45 p.m., Saturday and Sunday mornings until noon and Saturday evenings from 6:15–10:45 p.m.

MEAD POOL

**Heated Outdoor Family Aquatic Center
Open Friday, June 3 to Friday, August 19
1430 E. John Street • 920-832-5918**



Mead Pool is the place to beat the heat this summer! Come and enjoy the many amenities such as a giant water slide with over 250' of flume, 2 diving boards, numerous water play features, sand volleyball court, sand play area with playground equipment & water spigot, full service concession stand, and tons of green space to stretch out and enjoy the weather! Mead Pool is also ADA compliant for people of all abilities.

Admission Prices: Ages 3 and Under – FREE, Ages 4-17 – \$2.50, Ages 18-62 – \$3.50, Ages 62+ – \$2.50

ACTIVITY	DAYS	TIME
Lap Swim–Any Age	Monday–Saturday	11:30 a.m.–12:00 p.m.
Open Swim	Monday–Friday, Sunday Saturday	12:00–8:00 p.m. 12:00–6:00 p.m.
Mead Pool–Sand Play Area <i>Free during swim lessons</i>	Monday–Friday During swim lessons (closed July 4-8 until 12 p.m.)	9:45 a.m.–11:30 a.m.

MEAD POOL PRIVATE RENTALS

FEE: \$135/hour (includes lifeguards).
For groups over 336 people, more fees may apply.

TIMES: Saturday & Sunday mornings until 11:00 a.m.
Saturday evenings at 6:15 p.m.
Daily from 8:15-10:45 p.m.

MEAD POOL BIRTHDAY PARTY PACKAGES

Plan your next birthday party with your friends at Mead Pool! The birthday party package includes exclusive use of the shade pavilion during select open swim hours, birthday person name announced on P.A. system, and one helium balloon. It also includes 10 youth and 2 adult swim admissions good for the duration of your stay (additional admission costs over 10 are \$2.50 for youth, \$3.50 for adult). Special birthday party concessions available at additional cost.

COST: \$70

TIMES: 12:00-3:00 p.m. Monday-Saturday and
12:00-3:00 p.m. or 4:00-7:00 p.m. on Sundays



DOGGIE DAY AT THE POOL



Come down to Mead Pool on Saturday, August 20 for a whole lotta doggone fun! Owners can watch their dogs swim at Mead Pool all while enjoying the company of other dogs in this fun filled event! **Pre-registration is highly recommended**, but walk ups will be accepted. A maximum of 50 dogs per session will be allowed, no exceptions! Owners **MUST** bring vaccination papers with them to the pool showing most recent vaccinations.

For event rules, please visit our website at
www.appletonparkandrec.org.

FEE: \$5 per dog – Owners are NOT allowed to swim with pets per local and state health codes

AGES: Adults ages 18 and over. Children under 18 must have adult supervision

TIMES: 9:00-10:30 a.m. – Dogs under 25 lbs.
11:00 a.m.-12:30 p.m. – Dogs over 25 lbs.

CLASS #: 312306-S1 (small); 312306-S2 (large)

Mead Pool will be open on Sunday, July 3 from 11:30 a.m.-12:00 p.m. for lap swim and 12:00-6:00 p.m. for open swim and on Monday, July 4 from 11:30 a.m.-12:00 p.m. for lap swim and 12:00 p.m.-4:30 p.m. for open swim.

2016 Swim Lesson Registration Information

Thank you for enrolling your child into Appleton Parks and Recreation's "Learn to Swim Program". Hopefully your child will have a positive recreation experience and will be well on their way to learning about swimming and water safety. The following information will be helpful to you while participating in our swim lessons. Please contact the Director of Instruction at your pool or the Recreation Programmer with any questions.



- ▶ Swim lesson registration will be accepted either by mail, online, or walk-in at the Customer Service Center for all lesson sessions until the registration deadlines noted below.
- ▶ After each session deadline, you may register for the proceeding session only if there is space available and pay a \$10.00 late fee. Registration after the deadline will only be accepted in person at the City Hall 1st Floor Customer Service Center – NO EXCEPTIONS!
- ▶ **Registration is not accepted at any pool. Please do not show up at the pool expecting to be enrolled. If your child's name is not on the roster, the pool staff will not allow them to participate in the class!**
- ▶ If you plan to enroll in more than one session of swim lessons, we encourage you to register for the same level for the proceeding session. If the student passes to the next level during the initial session, please meet with the Director of Instruction on the last Thursday of lessons or call Appleton Parks and Recreation to move the student into the next level. **Class level advancements are not automatic!**

Swim Lesson - Registration Deadlines

Session A, E, G & H	Friday, June 10, 3:00 p.m.
Session B	Friday, June 24, 3:00 p.m.
Session C & F	Friday, July 15, 3:00 p.m.
Session D	Friday, July 29, 3:00 p.m.

Swim Lesson Participant Information

Children in the Locker Room: Children ages 5 and over are required to use their same gender locker room.

Pool Temperature: The pool temperature is maintained between 80-82 degrees Fahrenheit. Please note that Appleton Parks and Recreation does not control the water temperature at East or West Pools.

Outdoor Pool Lesson Policy: Outdoor swim lessons are **NOT CANCELLED** due to rain or cold weather. Safety skills are taught at this time in the bathhouse.

Refunds: Cash refunds will be granted if the request is made to Appleton Parks and Recreation **prior to the third lesson**. Please call 920-832-5905 to process your refund. There is a **\$10** processing charge **for all refunds for each participant and session**. If you choose, you can get a full credit back to your household account for use in future Parks and Recreation programs.

Parent Viewing: Parent viewing is allowed at the outdoor and indoor pools for all lessons. Parents or visitors are asked to remain seated in the designated parent viewing areas at all times and to not walk around the pool to take photos, etc. Parents are responsible for all children that are with them. Thank you for your cooperation.

Lockers: Lockers are available at Erb and Mead Pools to secure your belongings. Please bring a lock for your locker or leave your valuables in your vehicle. Appleton Parks and Recreation is not responsible for lost or stolen items. Secured lockers are not available at West Pool.

Swim Lesson Class Descriptions

INFANT & EARLY CHILDHOOD CLASSES

Parent /Child

- ▶ 6 months to 5 years of age.
- ▶ Parents are in the water.
- ▶ Builds swimming readiness by emphasizing **FUN!**
- ▶ Parents and children participate in several guided practices to learn water entry, kick, bubble blowing, water exploration and more!

Preschool Beginners

- ▶ Ages 3 - 4.
- ▶ Without the aid of parents in water.
- ▶ Emphasis on basic skill development.
- ▶ Learn listening skills, independence, front and back floats, kicks, breath control, water entry and more.
- ▶ Be 3 by first day of class.

Kindergarten Intermediate

- ▶ Ages 4 - 5 who have taken the Preschool class OR 5 year olds w/o previous lesson experience.
- ▶ Further develop skills learned in Preschool class.
- ▶ 4 and 5 year olds can enroll in Level 1 by passing this class.



LEARN TO SWIM CLASS DESCRIPTIONS

Level 5: Stroke Refinement

- ▶ Students will learn how to use survival swimming techniques, standing dives, front and back crawl, tuck surface and pike surface dives, front and backstroke flip turns, elementary backstroke, butterfly, breaststroke and sidestroke.

Level 6: Swimming and Skill Proficiency

- ▶ Students will strive towards the perfection of all strokes taught in the Learn to Swim Program as well as lifeguard readiness, swimming endurance, dives, and fitness swimming.

Special Needs Beginner Class

Purpose: To provide quality swimming instruction to maximize individual swimming potential.

- ▶ Ages 6 to 18.
- ▶ For children that have mild to moderate disabilities.
- ▶ Instructors will work with students based on their abilities.
- ▶ Please contact the Recreation Programmer at 920-832-3926 for any special requests prior to the start of the class.

Diving Instruction – SUMMER ONLY

Instruction for beginner through advanced divers. Students must have passed Level 4a swimming skills.

Teen/Adult Swim Lessons – FALL ONLY

Whether you are just learning how to swim or want to refine your skills, this is the class for you! The primary objective of the teen/adult swim lessons is to provide safe, enjoyable aquatic skills that will enhance the overall quality of the participant's life. Join our qualified and courteous instructors in a relaxed and social environment while improving your aquatic skills.

Level 1: Introduction to Water Skills

- ▶ Children ages 4-5 must have taken the Kindergarten Intermediate class and passed. Children ages 6 & up may enroll in Level 1.
- ▶ Students will learn basic water safety rules, how to use life jackets, submerging their mouth, nose and eyes, opening their eyes underwater, swimming on front and back using arm and leg actions, water safety skills, and front and back floats.

Level 2: Fundamental Aquatic Skills

- ▶ Students will learn about life jackets, water submersion, front and back glide, treading water, bobs and floats, front and back crawl, elementary backstroke, and jumping into deep water.

Level 3: Stroke Development

- ▶ Students will work on reaching assists, submerging and retrieving an object, front and back glide, front and back crawl, kneeling or standing dives (shallow dive progressions), rotary breathing, survival float, back float, butterfly-kick and body motion.

Level 4a: Stroke Improvement

- ▶ Students will learn about diving, build on elementary backstroke skills, further develop their breaststroke kicks, feet-first surface dives, deep water bobs, treading water and front and back crawl up to and beyond 50 yards.

Level 4b: Stroke Improvement II

- ▶ Students will be required to perform front and back crawl, elementary backstroke, introduction to breaststroke arms, introduction to the butterfly, treading water, introduction to sidestroke and various safety skills.



Fox Valley Swim Pass Promotion

In recognition of National Recreation and Parks Month in July, the Parks and Recreation Departments in the Fox Cities have teamed up to offer an exciting opportunity for all swim pass holders. All annual and summer passes will be good for use during open swim hours the week of July 11-15 at any of the locations listed below. You must present your pass at each pool to gain admission. Visit each individual department's website or call the pools listed below. Don't miss out on this great opportunity to visit a neighboring pool for no cost using your annual swim pass!

Erb Pool	1800 N. Morrison St., Appleton	920-832-5917	www.appletonparkandrec.org
Mead Pool	1430 E. John St., Appleton	920-832-5918	www.appletonparkandrec.org
Kaukauna Pool	600 Pool Rd., Kaukauna	920-766-6323	www.cityofkaukauna.com
Doyle Park Pool	100 Van Buren St., Little Chute	920-788-7390	www.littlechutewi.org
Sunset Beach	1010 Fulcer Ave., Kimberly	920-731-9299	www.vokimberly.org
Jefferson Park Pool	915 Third St., Menasha	920-967-5163	www.cityofmenasha-wi.gov
Neenah Pool	600 South Park Ave., Neenah	920-886-6080	www.ci.neenah.wi.us



Erb Pool Swim Lessons

Fee: \$25/resident, \$50/non-resident for sessions A, C-F

***Session B is 9 classes, cost is \$22.50 (no class July 8)**

SESSION A	*SESSION B 9 lessons (no class 7/4-7/8)	SESSION C	SESSION D
-----------	---	-----------	-----------

LEVEL	DAYS	TIME	June 13-24	June 27-July 15	July 18-29	August 1-12
Parent/Child	M-F	10:00-10:30 a.m.	334401-01	335401-01	336401-01	337401-01
Preschool Beginners	M-F	9:30-10:00 a.m.	-----	-----	336402-01	337402-01
	M-F	10:00-10:30 a.m.	334402-01	335402-01	336402-02	337402-02
	M-F	10:30-11:00 a.m.	334402-02	335402-02	336402-03	337402-03
	M-F	11:00-11:30 a.m.	334402-03	335402-03	336402-04	337402-04
Kindergarten Intermediate	M-F	9:30-10:00 a.m.	-----	-----	336403-01	337403-01
	M-F	10:00-10:30 a.m.	334403-01	335403-01	336403-02	337403-02
	M-F	11:00-11:30 a.m.	334403-02	335403-02	336403-04	337403-04
	M-F	11:30 a.m.-12:00 p.m.	334403-03	335403-03	336403-05	337403-05
Level 1	M-F	9:30-10:00 a.m.	-----	-----	336410-01	337410-01
	M-F	10:00-10:30 a.m.	334410-01	335410-01	336410-02	337410-02
	M-F	10:30-11:00 a.m.	334410-02	335410-02	336410-03	337410-03
	M-F	11:00-11:30 a.m.	334410-03	335410-03	336410-04	337410-04
	M-F	11:30 a.m.-12:00 p.m.	334410-04	335410-04	336410-05	337410-05
Special Needs	M-F	10:30-11:00 a.m.	334490-01	335490-01	336490-01	337490-01
Level 2	M-F	10:00-10:30 a.m.	334420-01	335420-01	336420-01	337420-01
	M-F	10:30-11:00 a.m.	334420-02	335420-02	336420-02	337420-02
	M-F	11:00-11:30 a.m.	334420-03	335420-03	336420-03	337420-03
	M-F	11:30 a.m.-12:00 p.m.	334420-04	335420-04	336420-04	337420-04
Level 3	M-F	10:00-10:30 a.m.	334430-01	335430-01	336430-01	337430-01
	M-F	10:30-11:00 a.m.	334430-02	335430-02	336430-02	337430-02
	M-F	11:00-11:30 a.m.	334430-03	335430-03	336430-03	337430-03
	M-F	11:30 a.m.-12:00 p.m.	334430-04	335430-04	336430-04	337430-04
Level 4a	M-F	10:00-10:30 a.m.	334441-01	335441-01	336441-01	337441-01
	M-F	10:30-11:00 a.m.	334441-02	335441-02	336441-02	337441-02
	M-F	11:00-11:30 a.m.	334441-03	335441-03	336441-03	337441-03
	M-F	11:30 a.m.-12:00 p.m.	334441-04	335441-04	336441-04	337441-04
Level 4b	M-F	9:45-10:30 a.m.	334442-01	335442-01	336442-01	337442-01
	M-F	11:15 a.m.-12:00 p.m.	334442-02	335442-02	336442-02	337442-02
Level 5	M-F	9:45-10:30 a.m.	334450-01	335450-01	336450-01	337450-01
Level 6	M-F	9:45-10:30 a.m.	334460-01	335460-01	336460-01	337460-01
Diving	M-F	10:30-11:15 a.m.	-----	335480-01	336480-01	-----

Erb Pool – Evening Preschool, Kindergarten, Level 1 Swim Lessons

LEVEL	DAYS	TIME	SESSION E June 13-24	SESSION F July 18-29
Preschool Beginners	M-F	5:00-5:30 p.m.	338402-01	339402-01
	M-F	5:30-6:00 p.m.	338402-02	339402-02
Kindergarten Intermediate	M-F	5:00-5:30 p.m.	338403-01	339403-01
	M-F	5:30-6:00 p.m.	338403-02	339403-02
Level 1	M-F	5:00-5:30 p.m.	338410-01	339410-01
	M-F	5:30-6:00 p.m.	338410-02	339410-02



Learning to swim is one of the most important life skills your child can learn. Begin the journey; enroll your child in one of our many swim lessons today!



MEAD POOL SWIM LESSONS

Fee: \$25/resident, \$50/non-resident

			SESSION A	SESSION B	SESSION C	SESSION D
LEVEL	DAYS	TIME	June 13-24	June 27 – July 15 (no class July 4-8)	July 18-29	August 1-12
Parent/Child	M-F	10:30-11:00 a.m.	-----	335501-01	336501-01	337501-01
	M-F	11:00-11:30 a.m.	334501-02	335501-02	336501-02	337501-02
Preschool Beginners	M-F	10:00-10:30 a.m.	334502-01	335502-01	336502-01	337502-01
	M-F	10:30-11:00 a.m.	334502-02	335502-02	336502-02	337502-02
	M-F	11:00-11:30 a.m.	334502-03	335502-03	336502-03	337502-03
Kindergarten Intermediate	M-F	10:00-10:30 a.m.	334503-01	335503-01	336503-01	337503-01
	M-F	10:30-11:00 a.m.	334503-02	335503-02	336503-02	337503-02
	M-F	11:00-11:30 a.m.	334503-03	335503-03	336503-03	337503-03
Level 1	M-F	10:00-10:30 a.m.	334510-01	335510-01	336510-01	337510-01
	M-F	10:30-11:00 a.m.	334510-02	335510-02	336510-02	337510-02
	M-F	11:00-11:30 a.m.	334510-03	335510-03	336510-03	337510-03
Level 2	M-F	10:00-10:30 a.m.	334520-01	335520-01	336520-01	337520-01
	M-F	10:30-11:00 a.m.	334520-02	335520-02	336520-02	337520-02
	M-F	11:00-11:30 a.m.	334520-03	335520-03	336520-03	337520-03
Level 3	M-F	10:00-10:30 a.m.	334530-01	335530-01	336530-01	337530-01
	M-F	10:30-11:00 a.m.	334530-02	335530-02	336530-02	337530-02
	M-F	11:00-11:30 a.m.	334530-03	335530-03	336530-03	337530-03
Level 4a	M-F	10:30-11:00 a.m.	334541-01	335541-01	336541-01	337541-01
	M-F	11:00-11:30 a.m.	334541-02	335541-02	336541-02	337541-02
Level 4b	M-F	9:15-10:00 a.m.	334542-01	335542-01	336542-01	337542-01
Level 5	M-F	9:15-10:00 a.m.	334550-01	335550-01	336550-01	337550-01
Level 6	M-F	9:15-10:00 a.m.	334560-01	335560-01	336560-01	337560-01
Diving	M-F	9:15-10:00 a.m.	334580-01	-----	-----	-----

EAST INDOOR POOL SUMMER SWIM LESSONS

2121 Emmers Drive
Enter East High School off of
Schaefer Street, entrance #25.
(Please do not enter building
through the pool doors)

**Fee: \$25/resident
\$50/non-resident**



		SESSION G	SESSION H
LEVEL	TIME	Monday & Wednesday June 20 – July 27 (no lessons July 4-8)	Tuesday & Thursday June 21 – July 28 (no lessons July 4-8)
Parent/Child	6:00-6:30 p.m.	331201-M1	-----
	6:30-7:00 p.m.	331201-M2	331201-T2
	7:00-7:30 p.m.	-----	331201-T3
Preschool Beginners	6:00-6:30 p.m.	331202-M1	-----
	6:30-7:00 p.m.	331202-M2	331202-T2
	7:00-7:30 p.m.	-----	331202-T3
Kindergarten Intermediate	6:00-6:30 p.m.	-----	331203-T1
	7:00-7:30 p.m.	331203-M2	-----
	7:30-8:00 p.m.	331203-M3	331203-T3
Level 1	6:00-6:30 p.m.	-----	331210-T1
	7:00-7:30 p.m.	331210-M3	-----
	7:30-8:00 p.m.	-----	331210-T3
Level 2	7:30-8:00 p.m.	331220-M4	-----
	8:00-8:30 p.m.	-----	331220-T4
Level 3	8:00-8:30 p.m.	331230-M1	331230-T1
Level 4a	8:00-8:30 p.m.	-----	331241-W3
Level 4b	8:00-8:45 p.m.	331242-M5	-----
Level 5 & 6	8:00-8:45 p.m.	331250-M5	-----

2016 Fall Swim Lessons

\$25/resident, \$50/non-resident

EAST POOL

Mondays: Sept. 12 – Nov. 21 (no class Oct. 31)
 Wednesdays: Sept. 14 – Nov. 16

LEVEL	DAYS	TIME	CLASS #
Parent/Child	Mon	6:00-6:30 p.m.	431201-M1
	Mon	6:30-7:00 p.m.	431201-M2
	Wed	6:30-7:00 p.m.	431201-W1
Preschool Beginners <i>(max class size of 8)</i>	Mon	6:00-6:30 p.m.	431202-M1
	Mon	6:30-7:00 p.m.	431202-M2
	Wed	6:30-7:00 p.m.	431202-W1
	Wed	7:00-7:30 p.m.	431202-W2
Kindergarten Intermediate <i>(max class size of 10)</i>	Mon	7:00-7:30 p.m.	431203-M1
	Mon	7:30-8:00 p.m.	431203-M2
	Wed	6:00-6:30 p.m.	431203-W1
	Wed	7:30-8:00 p.m.	431203-W2
Level 1	Mon	7:00-7:30 p.m.	432210-M1
	Wed	6:00-6:30 p.m.	432210-W1
	Wed	7:30-8:00 p.m.	432210-W2
Level 2	Mon	7:30-8:00 p.m.	432220-M1
	Wed	7:00-7:30 p.m.	432220-W1
Level 3	Mon	8:00-8:30 p.m.	432230-M2
	Wed	8:00-8:30 p.m.	432230-W1
Level 4a	Wed	8:00-8:30 p.m.	432241-W1
Level 4b	Mon	8:00-8:45 p.m.	432242-M1
Level 5 & 6	Mon	8:00-8:45 p.m.	432250-M1



WEST POOL

Mondays: Sept. 12 – Nov. 21 (no class Oct. 31)
 Thursdays: Sept. 15 – Dec. 1 (no class Oct. 27 & Nov. 24)
 Saturdays: Sept. 10 – Nov. 19 (no class Oct. 29)
 Adult Fees: \$35/resident, \$70/non-resident

LEVEL	DAYS	TIME	CLASS #
Parent/Child	Mon	6:00-6:30 p.m.	431101-M1
	Thur	6:00-6:30 p.m.	431101-H1
	Sat	10:00-10:30 a.m.	431101-S1
Preschool Beginners <i>(max class size of 6)</i>	Mon	6:00-6:30 p.m.	431102-M1
	Thur	6:30-7:00 p.m.	431102-H1
	Sat	9:00-9:30 a.m.	431102-S1
Kindergarten Intermediate <i>(max class size of 6)</i>	Mon	6:30-7:00 p.m.	431103-M1
	Thur	6:00-6:30 p.m.	431103-H1
	Sat	9:30-10:00 a.m.	431103-S1
	Sat	10:30-11:00 a.m.	431103-S2
Level 1	Mon	6:30-7:00 p.m.	432110-M1
	Mon	7:30-8:00 p.m.	432110-M2
	Thur	6:30-7:00 p.m.	432110-H1
	Sat	9:00-9:30 a.m.	432110-S1
	Sat	10:30-11:00 a.m.	432110-S2
Level 2	Mon	7:00-7:30 p.m.	432120-M2
	Thur	7:00-7:30 p.m.	432120-H1
	Sat	9:30-10:00 a.m.	432120-S1
Level 3	Mon	7:00-7:30 p.m.	432130-M1
	Thur	7:00-7:30 p.m.	432130-H1
	Sat	10:00-10:30 a.m.	432130-S1
Level 4a	Mon	7:30-8:00 p.m.	432141-M1
	Sat	10:00-10:30 a.m.	432141-S1
Level 4b	Sat	10:30-11:15 a.m.	432142-S1
Level 5 & 6	Thur	7:30-8:15 p.m.	432150-H1
	Sat	10:30-11:15 a.m.	432150-S1
Teen/Adult	Thur	8:15-9:00 p.m.	434199-H1





FALL AQUATIC ACTIVITIES AND CERTIFICATION COURSES

West Pool is Open Saturday, September 10, 2016 to Thursday, May 25, 2017

610 N. Badger Avenue in West High School

West Pool is available for open swim during the fall, winter, and spring seasons. West Pool offers two diving boards, lap lanes, a basketball hoop, and more! Water temperature is a constant 80-84 degrees. Please note that the schedule may change. For updated calendars, please visit our website at www.appletonparkandrec.org.

ACTIVITY	DAYS	TIME
Lap Swim	Mondays & Thursdays Saturdays & Sundays	8:00–9:00 p.m. 12:00–1:00 p.m.
Open Swim	Wednesdays & Fridays Saturdays & Sundays	6:00–8:00 p.m. 1:00–4:30 p.m.

First Aid and CPR

This program will help participants recognize and respond appropriately to cardiac, breathing and first aid emergencies. The courses in this program teach skills that participants need to know to give immediate care to a suddenly injured or ill person until more advanced medical personnel arrive and take over.

- DAY & DATE:** Tuesday, October 11
- TIME:** 5:00-9:00 p.m.
- LOCATION:** 1819 Witzke Blvd.
- FEE:** \$35 resident/\$40 non-resident
- CLASS #:** 416201-T1



West Pool Birthday Parties

Looking for a fun and exciting way to spend your next birthday? Look no further because West Pool is the place to be! Your fee of \$25 includes exclusive use of the lobby with seating for up to 16 people, a party balloon for the birthday boy/girl and two adult admissions along with free admission for the birthday boy or girl! Additional open swim fees apply. Call the Recreation Programmer at 920-832-3926 for complete details.



SKATEBOARDING LESSONS

Appleton Parks and Recreation has teamed up with Surfin Bird Skate Shop to offer skateboarding lessons for ages 6-17. Qualified instructors will be on hand to work with beginner to intermediate participants on learning skateboard skills. Please see our website for details and online registration!

- LOCATION:** Telulah Skate Park
- DAY:** Saturdays
- FEE:** \$42/session
- DATES:** **Session I:** July 9 – July 30 **Session II:** August 6 – August 27

Ages	Times	Session I	Session II
6-9	9:00-9:45 a.m.	312326-S1	312326-S4
10-12	9:45-10:30 a.m.	312326-S2	312326-S5
13-17	10:30-11:15 a.m.	312326-S3	312326-S6

Equipment: Skateboard is required, helmet and kneepads are encouraged but are not required.



Enjoy the wonderful trail system the Fox Cities has available. It is a great way to stay healthy, enjoy nature, improve the environment, and build strong communities.



An extensive network of trails throughout the Fox Cities offers a variety of recreational opportunities and connections to the various communities. Many of the trails are paved off-road trails, offering the opportunity to walk, bicycle, and skate on hard surface trails. Some segments are sidewalks along local streets that provide connections to the paved, off-road trails.

In addition to the off-road trails, several Fox Cities communities, including the City of Appleton, have implemented on-street bike lane programs that provide striping of bike lanes on streets and signed bicycle routes throughout the Fox Cities that complement the trail network and improve non-motorized transportation opportunities for commuting and recreation.

The "Trails of the Fox Cities" map identifies the trail program offered throughout the Fox Cities. Copies of the map are available at the Parks and Recreation website www.appletonparkandrec.org or at the City Hall 1st Floor Customer Service Center at 100 N. Appleton Street.



FOX CITIES BIKE CHALLENGE

Looking for an activity that is free, fun, improves your health, saves you money, and helps make the air cleaner? It's as simple as riding your bike!

The City of Appleton is teaming up with the Fox Cities Cycling Association and other area organizations to offer the Fox Valley Bike Challenge free to all Appleton residents. In 2015, over 1,000 Appleton residents participated in helping Appleton finish 1st out of over 1,000 Class II cities in the U.S. The City of Appleton has a number of trails and is adding more bike lanes to make it easier to get around the city by bike. Together, let's see if we can finish #1 again in 2016!



- AGES:** All ages are welcome to participate; this is a great family activity.
- FEE:** FREE
- REGISTRATION:** Register at www.nationalbikechallenge.org.
- DATES:** Begins May 1, 2016 and runs through September 30, 2016.
- QUALIFIED RIDES:** All outdoor bicycle riding counts, whether biking for fun with a family, commuting to work, mountain biking or riding with a group in the country.
- LOGGING RIDES:** You can easily log your rides at www.nationalbikechallenge.org or choose from several smartphone apps available to download.



Scan to register

If you have any further questions, please contact the Fox Cities Cycling Association www.foxcitiescycling.org.



1100 E. Fremont Street, Appleton, WI
www.reidgolfcourse.org
920-832-5926

Located in the heart of Appleton, Reid Golf Course is a challenging, yet fun-to-play, 18-hole course known for having excellent playing conditions.

Our customer service oriented staff wait with a well-stocked golf shop, food and beverage service, practice facilities, and club and cart rental for golfers needs. Reid Golf Course is always willing to accommodate a new golf league or outing and large golf events with a partnership with Riverview Gardens for banquets. Junior lessons and leagues are also available and the **"Sticks for Kids"** program offers free club rental for all youth. Visit the Reid Golf Course's webpage at www.reidgolfcourse.org to reserve a tee time or sign up to receive regular updates on course events and daily specials on food, beverage and merchandise throughout the year. You can also send your email address to reidgolfcourse@appleton.org and receive golf course information.

NEW IN 2016!

- Individuals who purchased an annual pass in 2015 will receive three (3) guest rounds with any annual pass purchased on or before March 31, 2016.
- All Junior and college summer passes have been reduced and a new \$10 Junior Green Fee has been added.
- Tax is included in all green fees.
- New Super Twilight and Replay rates. Check the Reid website at www.reidgolfcourse.org for more information.
- Annual cart and range passes now available.
- Check out our newly structured, comprehensive youth golf curriculum, designed to help kids ages 4 through 17 acquire the skills and confidence to enjoy the great game of golf. See page 25 for more information.

DISCOUNT CARDS - Receive 15% discount on all regular daily green fees

Junior	\$15
Adult	\$30

ANNUAL PASSES (Pass can be used anytime)

2016 FEE

Junior	\$200
Associate (age 19-40)	\$700
Adult (age 41-61)	\$1,050
Seniors (age 62 or older)	\$750
Family	\$1,100
Business	\$2,500
Cart	\$500 single/\$900 double

WEEKDAY PASSES

(Pass can only be used Monday-Friday)

2016 FEE

Junior	\$175
Adult	\$775
Senior	\$625
Jr./College Summer Pass (good Memorial Day thru Labor Day)	\$150



**A great place in your
community to golf!**

**For Outing and Business Passes
see page 51 for details about how
Reid can be your recreation
solution!**



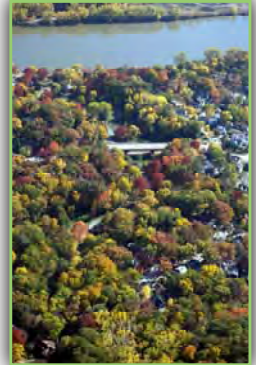
Follow Reid Golf Course
for Reid updates &
course news!



GOLF RATES	Adult 9 Hole Rates	Adult 18 Hole Rates	Senior 9 Hole Rates	Senior 18 Hole Rates	Twilight Rates (unlimited golf)
Weekday Rates	\$17	\$28	\$15	\$24	\$9.50 (after 6 p.m.)
Weekend Rates	\$19.50	\$31	\$19.50	\$31	\$9.50 (after 5 p.m.)

CITY OF APPLETON PARKS

The City of Appleton has 4 community and 24 neighborhood parks within its park system that provide over 520 acres of open space. The larger community parks offer a variety of recreational facilities and are designed to accommodate more activities and facilities and also serve a larger segment of the community. The smaller neighborhood parks are conveniently located throughout the city and provide a combination of active and passive recreational opportunities within a short walk of most city residences.



Reserving a Park Pavilion

Some of these parks have pavilions available for rental. Renting a pavilion is done on a first come, first serve basis. Pavilions are closed from September 30 to May 1 (except for Jones and Appleton Memorial Parks).

Refer to the website to make online facility reservations and view options or call 920-832-5905 to place a pavilion on hold for five (5) working days during which time the reservation agreement must be completed and the appropriate fee paid in full. Reservations are accepted 12 months in advance of the rental date.

List of City of Appleton Parks with Amenities



	Address	Acreage	Baseball/Softball	Soccer Fields	Tennis Courts * = Lighted y = youth striped also	Pickleball Court	Basketball Courts * = Lighted	Playground Equipment *ADA Accessible	Picnic Pavilion *w/food prep area	Restrooms	Gazebo / Open Air Pavilion	Swimming Pool w/wading area	Volleyball *in pool area	Disc Golf Course
Community Parks														
Appleton Memorial (AMP)	1620 Witzke Blvd.	143.5	7					X*	X*	X				
Erb	1800 N. Morrison St.	27.2		X	2* y		X	X*	X*	X		X		
Pierce	1035 W. Prospect Av.	38.6	X		3 y		X	X*	X*	X	X			X
Telulah	1300 E. Newberry St.	34.0	X	X				X*	2*	X				X
Neighborhood Parks														
Alicia	1301 W. Cedar St.	13.0						X*	X	X				
Arbutus	431 W. Atlantic St.	4.0						X*						
City	500 E. Franklin St.	8.6						X*	X	X				
Colony Oaks	801 N. Briarcliff Dr.	8.4			2		X	X*	X	X				X
Derks	3220 E. Guyette St.	9.2						X*	X*	X				
Einstein	3200 N. Durkee St.	6.8	X		2	X	X	X		X				
Green Meadows	65 Pheasant Ct.	5.7			2	X		X*	X	X				
Highview	110 W. Wayfarer Ln.	13.5						X*	X*	X				
Hoover	600 E. Roeland Ave.	12.2	2	X				X*	X	X				
Jaycee	1200 S. Jefferson St.	5.0	X				X	X*	X	X				X
Jones	301 W. Lawrence St.	5.7					X*	X*	X*	X				
Kiwanis	2315 N. Nicholas St.	7.0	X				X	X*	X*	X				
Linwood	401 N. Douglas St.	9.5	X		2*	X	X	X*	X	X				
Lions	1920 S. Matthias St.	6.0	X					X*	X	X				
Lutz	1320 S. Lutz St.	5.6						X*		X	X			
Mead	1430 E. John St.	8.3						X*				X	X*	
Peabody	601 N. Green Bay Rd.	14.0					X	X*	X*	X				
Providence	4620 Providence Ave.	2.8						X*						
Schaefer	610 S. Buchanan St.	6.5					X	X*	X*	X				
Summit	2423 N. Summit St.	5.0			2	X	X	X*						
Veterans	1201 S. Memorial Dr.	4.4						X*						
Vosters	4200 E. Ashbury Dr.	5.7						X*						
Vulcan Heritage	535 W. Water St.	2.0												
Woodland	1815 Schaefer Circle	9.2	X					X*			X			

**Boat & Kayak Launch and Fishing Pier at Lutz Park Lighted Skateboard Park at Telulah Park
Universal Playground, Fishing Pier, Archery Range & Miracle League Field at Appleton Memorial Park**

PARK IMPROVEMENTS TO VISIT IN 2016!

Playground Improvements

City Park received new play equipment for children ages 2-5, a shade arbor, and ADA accessible artificial turf. With a generous donation by the Kiwanis Club, the Green Meadows Park playground equipment for children ages 2-5 was replaced with new equipment. At Lions Park, a new structure for children ages 5-12 was also installed.



Tennis and Basketball Courts

The basketball court at Summit Park was reconstructed and lined. Tennis courts at Pierce Park, Erb Park, and Einstein Park were resurfaced and lined. The tennis courts at Einstein Park now have Pickleball lines.



Lutz Park

An ADA accessible canoe/kayak launch was installed with assistance from the Lutz Family Fund and the Fox-Wisconsin Heritage Parkway.



Pioneer Park

The newest addition to the City's park system includes benches, walking path, landscaping, and open green space. The park is located on the corner of Walnut Street and Prospect Avenue.



Appleton Memorial Park

A master plan was updated and the parking lot on the northwest end that services the Miracle League Field and the other City ball diamonds was reconstructed with ADA improvements.

Pierce Park Pavilion and Stage Area

Replacement of asphalt and concrete surrounding the pavilion and restrooms were completed. Landscaping and ADA accessible paths connecting the playground, tennis courts, and parking lot were added.

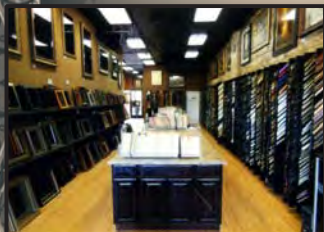


In 2015, the City Council approved an ordinance that only allows alcohol possession and consumption in City parks with a valid permit unless it is otherwise allowed by City policy. The City's "Park Pavilions and Special Areas - Rental and Fee Schedule Policy" does allow alcohol possession and consumption in pavilions and special areas as part of the approved rental. For more information on how to obtain a permit separate from the pavilion or special area rental, please contact the Appleton Police Department at 920-832-5500.

Foxley's Gallery, Ltd.

Since 1984

The Best Price, Service, and Selection
of Art and Custom Framing in the Fox Valley



Beautiful Art & Framing at an Attractive Price

623 W. College Ave. Appleton, WI
(Downtown Appleton)

PHONE 920-738-0303 FAX 920-380-7061

HOURS: Mon-Fri 10AM-5:30PM, Sat 10AM-3PM
www.foxleysgallery.com

Get Ready For Spring With Us...

Ground Control LLC

-Lawn Care -Snow Removal
-Maintenance

A few things we offer...

5-STEP LAWN CARE FERTILIZATION & WEED CONTROL Call Now & Get 10% OFF

OR 15% OFF

DELUXE LAWN CARE PACKAGE INCLUDES: 5-Step Program, Lawn Rolling, Fall Core Aeration & 3 Applications of Home Perimeter Insect Control

LOCALLY OWNED & OPERATED

920-740-9534



**TRANSFORM YOUR CHILD'S SUMMER
FROM ORDINARY TO EXTRAORDINARY!**

Learn more at campinvention.org
or by calling 800.968.4332.

Sign up by March 21 to save \$25!

Save \$15 when you register by
May 10th and use promo code SPRING

Edison Elementary | July 25 - 29, 2016

St. Francis Xavier Elementary | August 1 - 5, 2016



National Inventors
Hall of Fame

In partnership with the
United States Patent and Trademark Office

920.739.4306

Downtown Appleton

Tracy Van Zeeland

Award Winning Master Photographer
Certified Professional Photographer

M. C.
KINNEY
PHOTOGRAPHY



GAME FACE
SHOWCASE
YOUR PASSION
WITH 16X20
SPORTRAITS

“when game day
meets classic
portrait art”

Group Rates
Available

call early in the
season to schedule
your game/session

ALL AGES
ALL ACTIVITIES



www.mckinneyphotography.net



APPLETON CITY BAND

JOIN US THIS SUMMER AT PIERCE PARK!
1035 W. Prospect Avenue

The Appleton City Band concerts are held in Pierce Park starting at 7:00 p.m. every Tuesday from June 14 to August 16. You can also catch the band performing during the Memorial Day Parade, Flag Day Parade, and Christmas Parade. Bring your lawn chair and enjoy the music!

FCAA ADULT SOFTBALL at Appleton Memorial Park

Leagues Start Sunday, May 1
REGISTER TODAY!

www.foxcitiesadultathletics.com



THE MIRACLE LEAGUE OF THE FOX VALLEY

This is an organized, non-competitive baseball league for kids ages 4-19 with cognitive and/or physical disabilities. Games are played on weeknights in Appleton's Memorial Park at the fully accessible John Wollner Fox Cities Miracle League field. The League is now accepting registration for players and community volunteers for the 2016 summer baseball season. Registration closes on March 25, 2016. Opening Day Ceremonies are on Saturday, June 4, from 10 a.m. to noon with play beginning the week of June 6. Program and registration information is available at www.foxvalleymiracleleague.com.



APPLETON FAMILY ICE CENTER

1717 E. Witzke Blvd. in Appleton Memorial Park 920-830-7679
www.appletonice.org



The Appleton Family Ice Center offers a variety of learn to skate opportunities, open skating, hockey camps and clinics, and more! Open skating weekdays from 11 a.m.-1 p.m. and Sundays from 3-5 p.m. Times could change due to tournaments or other events so please check our calendar. Cost is \$4 admission and \$3 skate rental.

***All 2016 annual swim pass holders get \$1 off admission and \$2 off skate rentals during any open skate all year!**

**SPECIAL SPRING BREAK SKATING: FREE admission and \$3 skate rentals for
OPEN SKATING: MARCH 31 & APRIL 1; 11:00 a.m.-1:00 p.m.
OPEN HOCKEY: 1:00-2:30 p.m. Fee: \$7**



READY.

Since 1949, McCarty Law has worked in collaboration with its community partners based on shared values to enrich our community **for a hopeful future for all of us.**

McCarty | Law LLP

920-882-4070 • McCartyLaw.com 

Gregg Curry • John J. Russo • Steven J. Cerasoli • Scott C. Barr • Reg P. Wydeven
 Rebecca L. Kent • Kristy A. Christensen • Michael W. Curry • Philip A. Munroe
 Melissa R. DeVantier • Jon L. Fischer
 Of Counsel: Dennis M. Wydeven • Randall A. Haak • John A. Esler • Janet K. Porter



FOR YOUTH DEVELOPMENT®
 FOR HEALTHY LIVING
 FOR SOCIAL RESPONSIBILITY



BEST SUMMER EVER!

Friendship, Accomplishment, Belonging

YMCA OF THE FOX CITIES

SUMMER CAMPS Registration Going On Now! www.ymcafoxcities.org



Scheig Center & Appleton Memorial Park Gardens

It's a great place for your next event or meeting!

The Scheig Center may be utilized by the community including individuals, non-profit groups, corporations and the City of Appleton's own recreation division to educate, celebrate and provide recreational opportunities. The facility:

- Available to rent year-round from 8:00 a.m. to 8:00 p.m.
- Features a stunning cathedral ceiling with a natural look and feel through exposed wood beams, and windows and doors over looking the gardens
- Offers two kitchen areas
- Capacity up to 75 people

To reserve the facility contact: Appleton Parks and Recreation Customer Service, 920-832-5905.

Questions about the facility or to schedule a tour of the facility contact: Heidi Erickson, 920-832-3927.

Appleton Memorial Park Gardens

Appleton Memorial Park Gardens feature many gardens including a native rose garden, serenity butterfly garden, native wildflower garden, fragrance garden, Veterans memorial garden and a water feature. Benches placed throughout the grounds encourage visitors to sit and enjoy the colors, textures, varieties and fragrances of the plantings. If you are interested in joining the Friends of Memorial Park Gardens committee, assist with a specific task or join the volunteers who help tend to the gardens; please contact Lucy Valitchka at lmvalitchka@new.rr.com.

Reid Golf Course – Make us your business recreation solution!

Reid Golf Course located in the heart of Appleton is a great place for you to enjoy a round of golf with clients and co-workers. Reid offers a wide variety of ideas for businesses to enjoy our meticulously manicured golf course including Outings and Business Passes.



- Outings are geared toward a one-time full day experience for 18 holes, food, drink & fun.
- Outings can accommodate up to 144 players and be tailored to your exact needs.
- Business Passes can be enjoyed seven days a week.
- The Business Pass includes a foursome of golf and two golf carts daily.
- Both outings and business passes at Reid offer a great way to conduct business with clients, team build with employees and unwind after a long day at work!



Please check Page 45 or go to www.ReidGolfCourse.org for more information.

Follow these dates for Class Registration!!

*A resident is any person who lives within the corporate city limits of Appleton. City and school district boundaries are not the same. Appleton property owners who reside outside the city limits are considered non-residents. Appleton mailing addresses do not automatically mean that you are a city resident. Please bring proof of residency if you do not own your home and are a renter.

Resident registration begins (online)	Saturday, March 19, 2016
Resident registration begins (mail & in-person)	Wednesday, March 30, 2016
Non-resident registration begins (online)	Saturday, April 2, 2016
Non-resident registration begins (mail & in-person)	Wednesday, April 6, 2016

See page 38 for swim lesson registration deadlines.

REGISTRATION DEADLINES: Online and walk-in registration deadlines are 1 week prior to the first day of class by 4:00 p.m. Mail-in registration must be postmarked one week prior to first day of class. **Youth sports, fall dance and swim lesson deadlines vary**, so please see descriptions in the City Guide for individual registration dates. Registration will be accepted after the deadline if there are openings in the class, with the exception of swim lessons. However, do not wait to register as classes and programs may be canceled due to low enrollment on the deadline date.

SWIM LESSON REGISTRATION DEADLINES: Register for all of your sessions now. Registration will be accepted at the office until the deadline listed. **REGISTRATIONS ARE NO LONGER ACCEPTED AT THE POOLS.** See page 38 for details.

Recreation Fee Waiver Policy: Funding is available for residents who are unable to participate in Appleton Parks and Recreation programs for financial reasons. To obtain a Fee Waiver form, please call 920-832-5905.

The cities of Appleton, Menasha & Neenah have entered into a reciprocal agreement allowing participants of each city to register as a resident in each other's parks and recreation programs.

3 Simple Ways to Register...

1. ONLINE REGISTRATION

To use online registration you must be registered as a household using the Household Information Form. Mail or fax this form to 920-993-3103. Master Card and Visa are the accepted forms of payment for online registration. **BROWSE THE CLASSES.** Online registration will not open until Saturday, March 19. However, you can browse the classes and begin to make your selections now. Simply sign in as a "Guest."



Questions?

Call 920-832-5905 for assistance.

2. WALK-IN OR DROP-OFF REGISTRATION

City Hall – Downtown at 100 N. Appleton Street
 Walk-in to 1st Floor Customer Service Center
 Wednesday, March 30, 2016, City of Appleton/Menasha
 Wednesday, April 6, 2016, Non-Residents/Neenah
 Between 8:00 a.m. and 4:30 p.m., Monday through Friday

Your registration and payment can be placed in the drop box on Appleton Street or use the convenient drive thru. Make checks payable to: **"City of Appleton"**

3. MAIL-IN REGISTRATION

Mail your completed registration form along with your check or money order made payable to: **"City of Appleton"**

MAIL TO:

City of Appleton Parks & Recreation
 P.O. Box 1976, Appleton, WI 54912-1976



The City of Appleton does not provide any accident insurance coverage for participants. Parks and Recreation Department activities are undertaken at the participant's own risk and participation is subject to Wisconsin State Statute Section 895.52.

REFUND POLICY

Refunds are granted when requested prior to the third class meeting. Refunds will be either a full credit to your household account or by check (subject to a \$10 processing fee per person and program). Refunds of \$5 or less will be credited to your account. Refunds are not granted for coupons or swim passes. If a class is full, the payment received will be credited to the family account or returned upon request. The credit may be used toward a future registration.

APRD Promotional Photography Guidelines

For program promotion purposes, photograph/video may be taken of participants from time to time and used for advertising/promotional purposes only. If you do not wish to have your child photographed or videotaped for promotional purposes, please notify the photographer and/or class instructor.

2016 Swim Pass Sale

Please complete the form to the right and return:

By mail:

Appleton Parks & Recreation
P.O. Box 1976
Appleton, WI 54912-1976

By walk-in:

City Hall
1st Floor Customer Service Center
100 N. Appleton Street
Appleton, WI 54911

Please note that new pass holders will need to have their photo taken at the Customer Service Center on the first floor of City Hall, 100 N. Appleton St. Regular business hours are Monday through Friday, 8:00 a.m. to 4:30 p.m.

Discount Pass Sales

Discount swim passes are available to City of Appleton, City of Menasha and City of Neenah residents only. The discount price is valid until May 4, 2016. After May 4, passes may be purchased at the regular price.

Swim Pass Guidelines

- Passes are good for admission to Erb, Mead, and West Pools through December 31, 2016.
- Swim passes will admit holder to open swim, lap swim & water walking.
- Photo ID swim passes are issued at the Customer Service Center January through December or at **Mead Pool June-August**. If passes are purchased at Erb or West Pools, you will have a 2-week grace period to get your photos taken. During this time period, your receipt may be used as your pass. If photos are not taken within the 2-week grace period, you will need to purchase new passes.
- Lost swim pass – A \$5 fee will be charged to replace a lost pass. Replacement passes are available only at the Customer Service Center or Mead Pool. Found passes will not be refunded.
- A family swim pass includes all family members living at the same address, with a maximum of two adults. 18 year olds are considered adults. This does not include baby sitters or children under 3. If a child is turning 4 during the calendar year, they will need to buy a pass.

“Building communities and enriching lives where we live, work and play.”

APPLETON PARKS AND RECREATION 2016 SWIM PASS ORDER FORM

- Annual swim passes are available to residents and non-residents of the City of Appleton
- 2007-2015 pass holders do not need to have a new photo taken unless desired. It is recommended that all children who had their picture taken prior to 2013 have their picture retaken.
- Passes will be mailed when order form is processed.
- All people wishing to purchase a pass who did not have a 2007-2015 swim pass must come to the Customer Service Center at 100 N. Appleton Street to have their photo taken or at Mead Pool June-August.
- Receipts will be issued for passes purchased. If all family members cannot be present at the time of purchase, they may come in separately to have their photos taken.
- **PROOF OF RESIDENCY REQUIRED AT TIME OF PURCHASE** i.e., driver’s license, utility bill (electric water, phone, credit card).
- Make checks payable to: City of Appleton

FAMILY LAST NAME: _____

ADDRESS: _____

PHONE #: _____

List all pass holder's names	Date of Birth	Age	
Swim Passes (ages 3 & under free)	Resident Annual Discount Price 12/1/15 - 5/4/16 (circle one)	Resident Annual Regular Price 5/5/16 - 12/31/16 (circle one)	Non-Resident Annual Regular Price 12/1/15 - 12/31/16 (circle one)
YOUTH (AGES 4-17)	\$35	\$50	\$75
ADULT	\$50	\$70	\$105
SENIOR (AGES 62+)	\$35	\$50	\$75
FAMILY OF 2	\$70	\$90	\$130
FAMILY OF 3	\$85	\$110	\$155
FAMILY OF 4	\$100	\$130	\$180
FAMILY OF 5	\$110	\$145	\$200
FAMILY OF 6 & UP	\$120	\$155	\$215

FOR OFFICE USE ONLY: Date _____ Rec'd _____ Cash _____ Charge _____
Check# _____ Receipt# _____ PB _____

APPLETON PARKS & RECREATION Program Registration Form

(Please Print)

FAMILY LAST NAME _____ STREET ADDRESS _____

CITY _____ ZIP _____ EMAIL _____

FIRST NAME OF PARENT(S) OR GUARDIAN(S) _____

Home Phone _____ Cell _____ Work _____

DO YOU LIVE INSIDE THE CORPORATE CITY LIMITS OF:

APPLETON? YES _____ NO _____ NEENAH? YES _____ NO _____ MENASHA? YES _____ NO _____

CHECK YOUR RESIDENCY! Grand Chute _____ Darboy _____ Town of Harrison _____ Other _____

Persons living outside the corporate city limits of Appleton must pay the non-resident fee. Living in the Appleton Area School District and/or having Appleton as part of your address does not mean you live within the corporate city limits of Appleton.

A resident is defined as any individual who resides within the corporate city limits of Appleton, Neenah or Menasha.

A non-resident is defined as any individual who resides outside the corporate city limits of Appleton.

PARTICIPANT'S FIRST NAME	PARTICIPANT'S BIRTH DATE	CLASS NAME	1 ST CHOICE CLASS NUMBER	2 ND CHOICE CLASS NUMBER	FEE

Complete the Household Information Form ONLY if you have not previously submitted the information. Please do not complete this section if you have already submitted it unless your household information has changed. If resubmitting, proof of residency may be required – enclose a photo copy of driver's license or utility bill (electric, water, phone, credit card). See previous page for more information on proof of residency.

Spouse and children information:

FIRST NAME	LAST NAME	MALE (M) or FEMALE (F)	DATE OF BIRTH	CURRENT GRADE

MAKE CHECKS PAYABLE TO: CITY OF APPLETON
MAIL TO: CITY OF APPLETON, Parks & Recreation
 P.O. Box 1976, Appleton, WI 54912-1976

Reminder: did you attach proof of residency?
 This form may be duplicated.

FOR OFFICE USE ONLY

RCD \$ _____ BY _____ DATE _____

Check # _____ Cash _____ Credit Card _____

PB _____ RECEIPT _____ DATE _____

YOUR FAVORITE SLOT IS WAITING FOR YOU



**UPDATED AMENITIES
SPACIOUS GAMING FLOOR
13,000 SQ FT CONVENTION CENTER**

MenomineeCasinoResort.com

Enjoy our 25,000 square foot gaming floor with all of your favorite gaming activities in a modern space at Menominee Casino Resort. 820 Slot Machines, Blackjack, Let-It-Ride, Progressive Three Card Poker, Ultimate Texas Hold 'em, Mississippi Stud, Bingo Hall and dining are all under one roof.

Move easily between Convention Center, Hotel and Gaming areas. Don't miss the chance to plan your wedding, organize your business conference, or hold your event in our 13,000 square foot convention center. Extend your stay by reserving one of our well-appointed hotel rooms with elegant design flourishes and furnishings.



**N277 Hwy. 47/55
Keshena, WI 54135
800-343-7778**





March-September, 2016 Edition
 100 N. Appleton Street
 Appleton, WI 54911-4799
 Mayor's Office: 920-832-6400
 Parks & Recreation: 920-832-5905

"...meeting community needs...enhancing quality of life."

**PRSR STD
 US POSTAGE
 PAID
 APPLETON WI
 PERMIT NO. 11**

**CARRIER ROUTE
 ECRWSS**

POSTAL CUSTOMER



LIVE MUSIC

LUNCHTIME LIVE

Houdini Plaza
 Thursdays, June 2-Sept. 1

**HEID MUSIC
 SUMMER CONCERTS**

Houdini Plaza & Jones Park
 Thursdays, June 2-Sept. 1

STREET MUSIC WEEK

June 6-10

MILE OF MUSIC

Aug. 4-7

**ART &
 FAMILY FUN**

ART ON THE TOWN

May 20, June 17, July 15,
 Aug. 19, Sept. 16 6-9pm

FLAG DAY PARADE

June 11, 2pm

JUNE-TEENTH CELEBRATION

City Park June 19

OUTDOOR MOVIE SERIES

July-Aug.

**BUILDING FOR KIDS
 CHILDREN'S PARADE**

July 27, 6:30pm

ART AT THE PARK

City Park July 31

SHOPPING

**LADIES DAY
 DOWNTOWN** April 30

GIVING HOPE May 1-7

**MIDWEEK
 FARM MARKET**

June-Sept

**SATURDAY MORNING
 FARM MARKET**

Inside City Center thru May 28
 On College Ave. June 18-Oct. 29

appletondowntown.org [#onegreatplace](#)

60+ UNIQUE SHOPS • 70+ PUBS & EATERIES • ART GALLERIES & PERFORMANCE VENUES • FAMILY FUN ATTRACTIONS